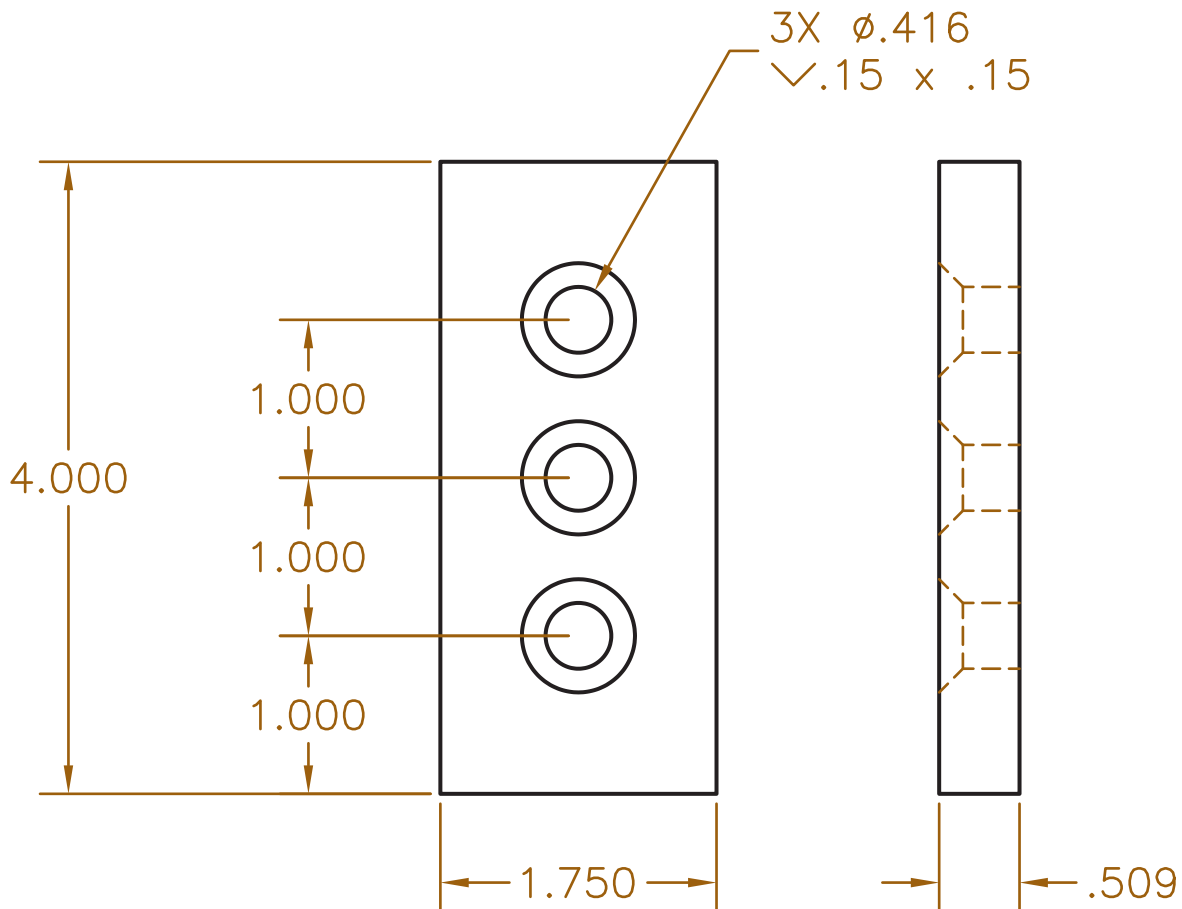


Exercise 14-9

1. Begin a new drawing.
2. Construct the object shown in the illustration below.



3. Create a section object using the **Face** option of the **SECTIONPLANE** command. Select the long side of the object.
4. Using the **MOVE** command, move the section object so that it cuts through the centers of all three holes. Note: You may need to turn off live sectioning for object snaps to correctly work. If you do so, then turn live sectioning back on after moving the section object.
5. Delete the section object.

(Continued on the next page)

6. Draw another section object by picking two points. The section plane should cut through the centers of all three holes. Turn on live sectioning.
 7. Delete the section object.
 8. Use the **Draw section** option to construct a section object that cuts through the center of the first hole at 90°. Turn on live sectioning. More material may be removed from the solid than you expected. You will learn how to correct this in the next section of the book.
 9. Save the drawing as EX14-9.
- To continue practicing solid model sectioning, complete act14-09.dwg available on the companion website.