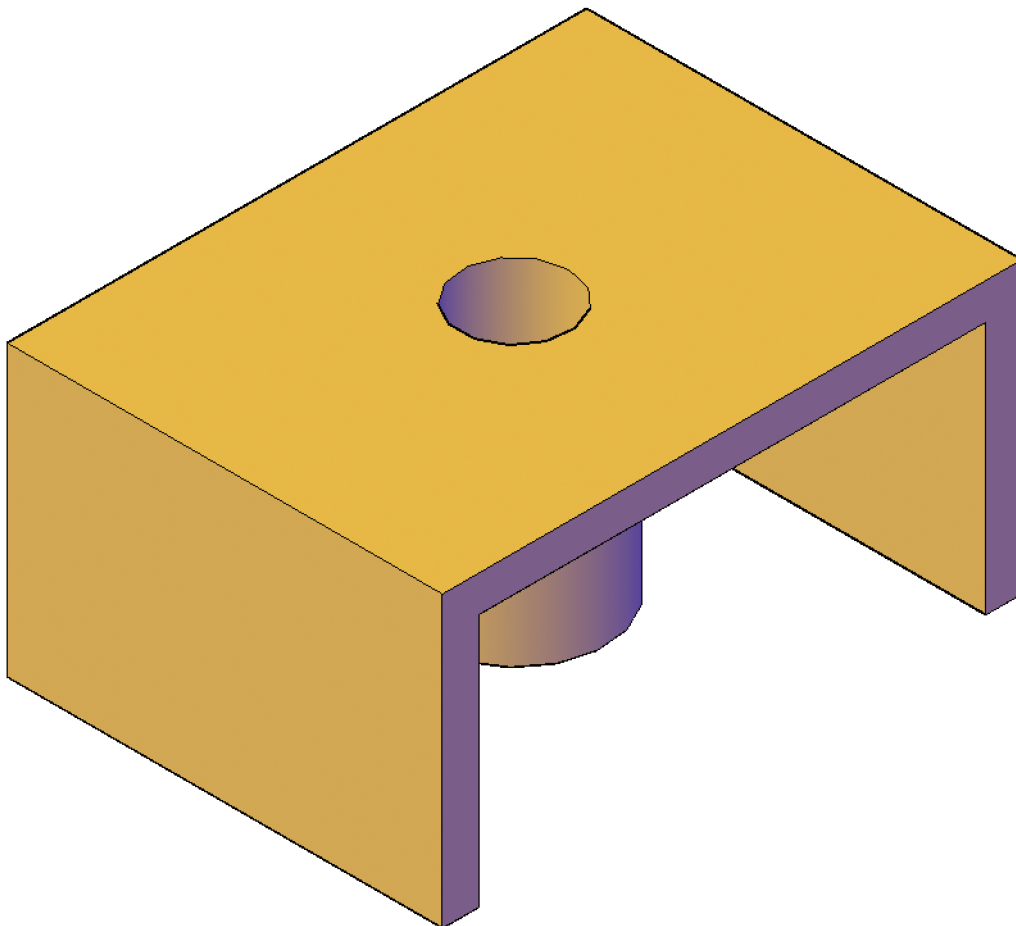


## Exercise 12-8

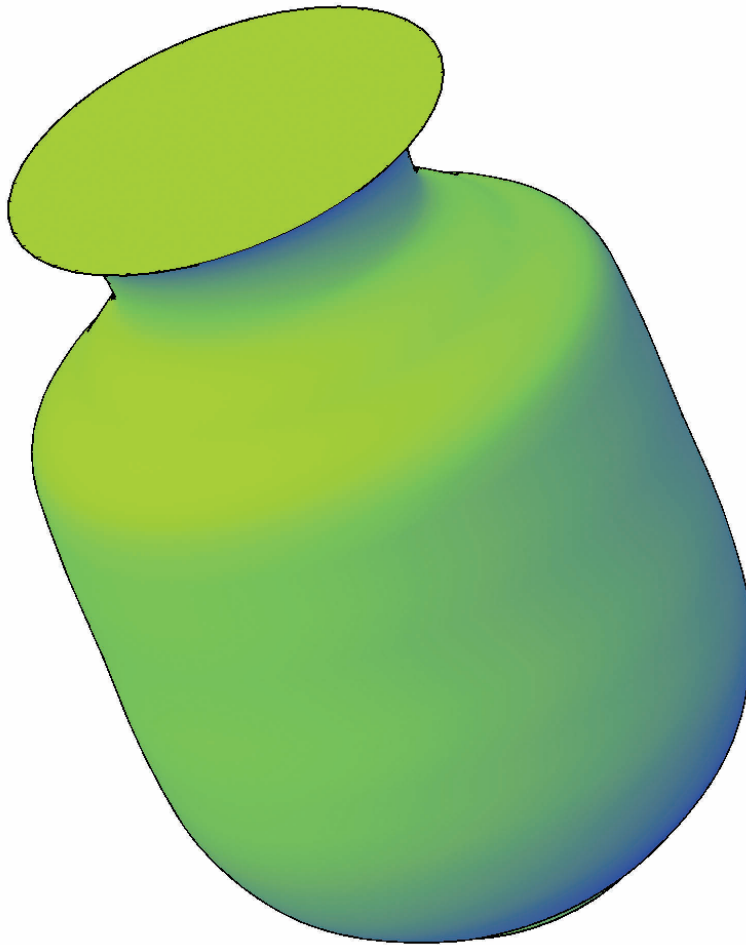
1. Create a solid box with the dimensions of  $4 \times 3 \times 2$ .
2. Draw a  $\varnothing.75$  circle in the center of the top face of the box.
3. Create an imprint of the circle on the top face of the box.
4. Extrude the circular face 1.5 units below the top face. Picking the circular edge selects two faces—the face within the circle and the top face of the box. Remove the top face of the box before extruding.
5. Select the **Shell** option of the **SOLIDEDIT** command and pick the object. Remove the front, back, and bottom faces.
6. Shell the box using a shell offset distance of .25. Your drawing should look like the one shown in the following illustration.



7. Save the drawing as EX12-8A.

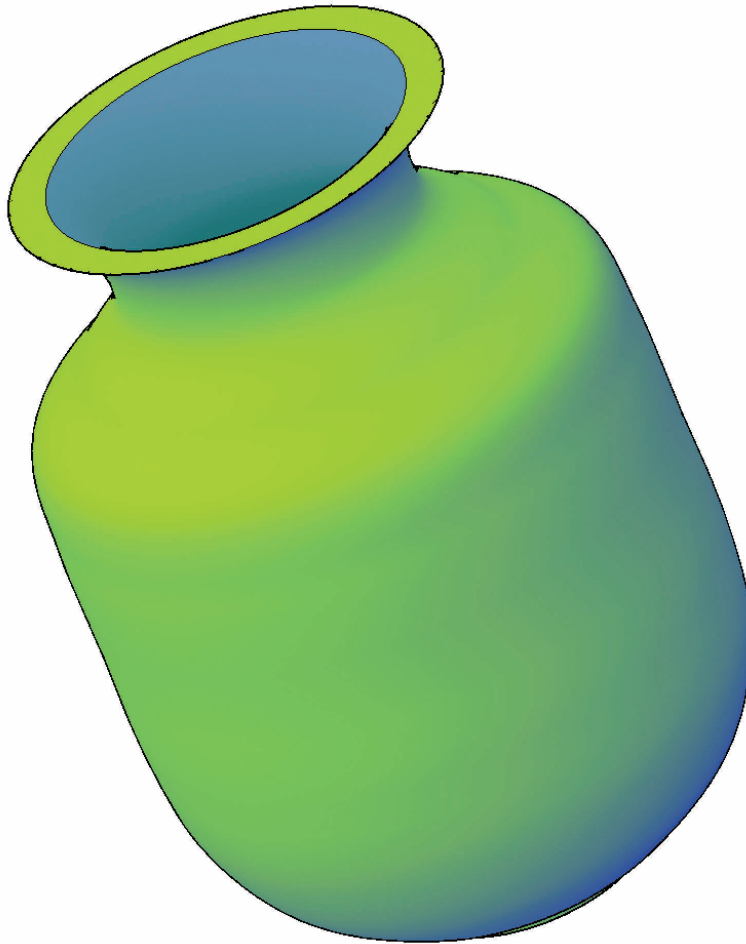
*(Continued on the next page)*

8. Open the drawing Vase\_body.dwg available on the companion website.
9. Enter the **LOFT** command.
10. Select the 12 profiles in order from bottom to top.
11. Enter the **Settings** option. In the **Loft Settings** dialog box, select **Start cross section** in the **Normal to:** drop-down list. Pick the **OK** button to create the loft. See the following illustration.



*(Continued on the next page)*

12. Using the **SOLIDEDIT** command, shell the vase body with an offset distance of .125. Remove the top face. See the following illustration.



13. Using the **SOLIDEDIT** command, color the inside face of the vase dark blue.
14. Save the drawing as EX12-8B.