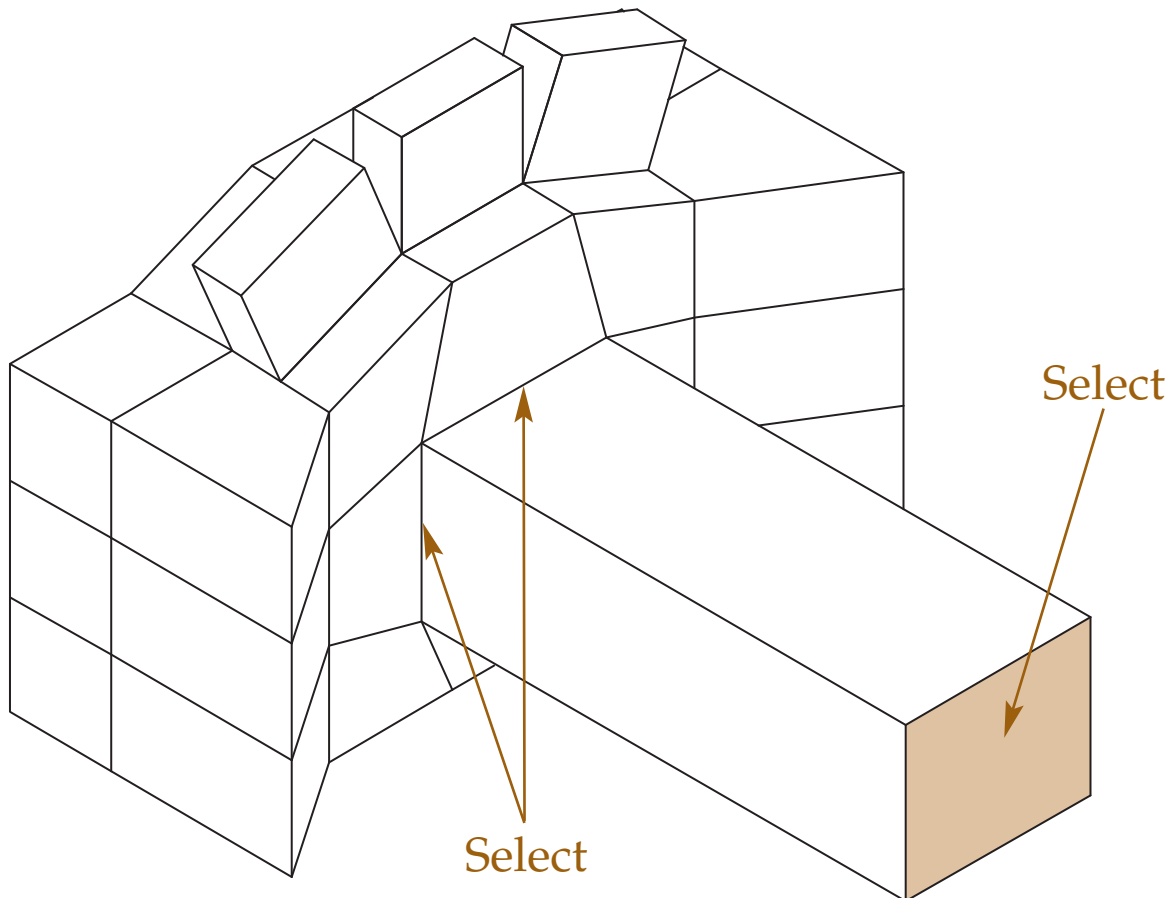


## Exercise 9-7

In this exercise, you will further refine the conceptual camera model. You will add creases to the model and smooth it.

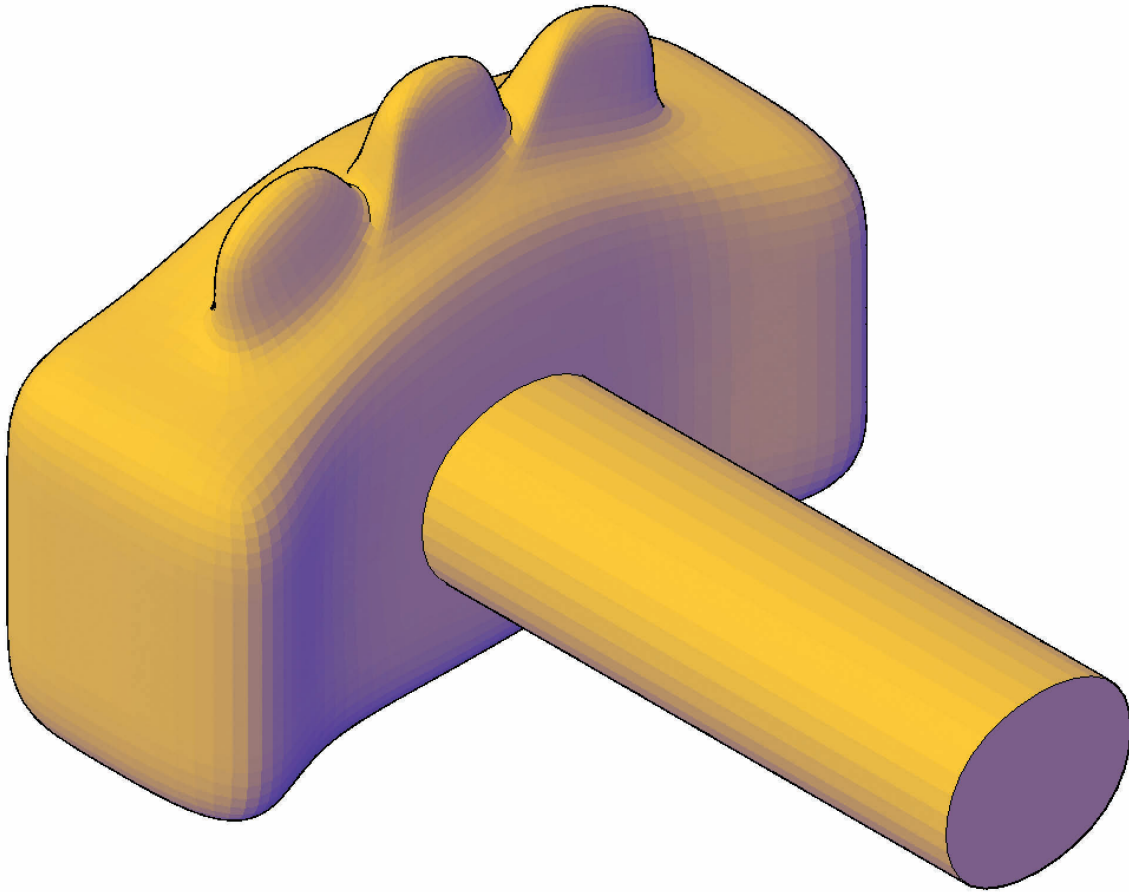
1. Open the drawing EX9-6 completed in the previous exercise. Save it as EX9-7.
2. Enter the **MESHCREASE** command.
3. Select the front face of the lens tube, as shown in the following illustration. Also, select the four edges where the tube meets the body.



4. When prompted, enter a crease value of 3.

*(Continued on the next page)*

5. Select the mesh and display the **Properties** palette. Change the smoothness level to 3. Your drawing should appear similar to the following illustration.



6. Change the smoothness level to 4. Notice how the ends of the lens tube are now slightly rounded.
7. Return the smoothness level to 3 and save the drawing.