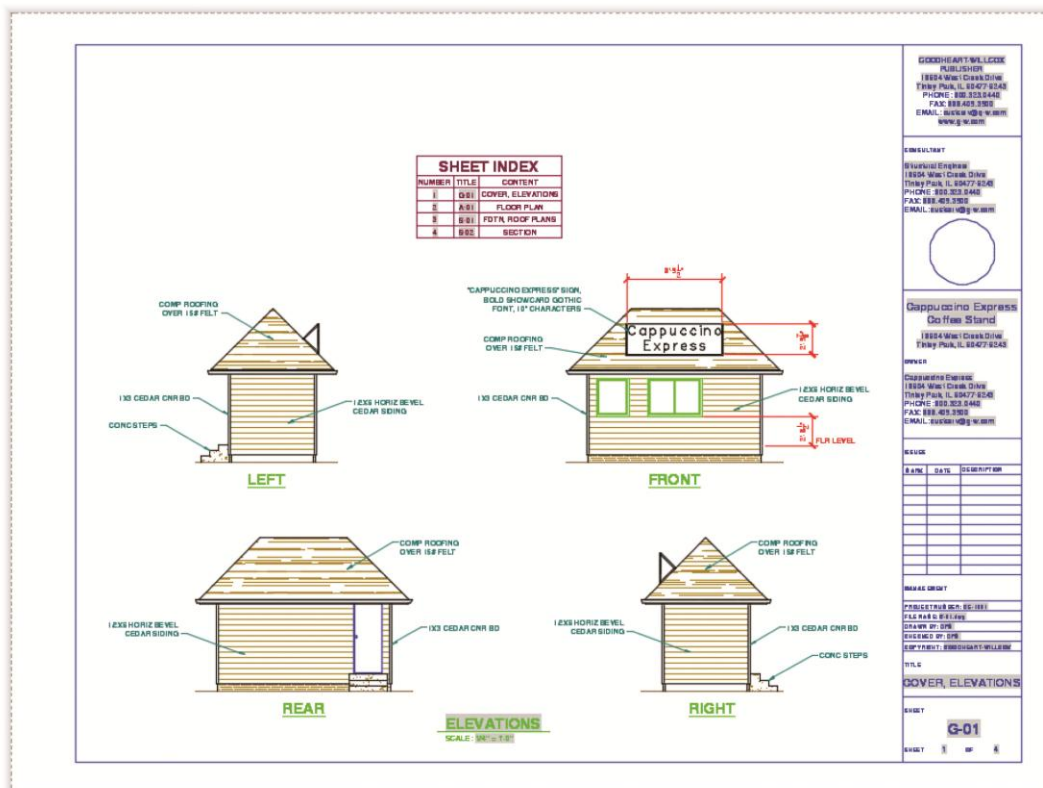


## Exercise 33-6

1. Continue from Exercise 33-5 or start AutoCAD.
2. Open the Cappuccino Express sheet set you created in Exercise 32-2.
3. Display the **Sheet List** tab of the **Sheet Set Manager** and double-click on the 1 - G-01 sheet to open the file and display the layout.
4. Set the A-ANNO-SCHD layer current.
5. Right-click on the sheet set and select **Insert Sheet List Table...** to display the **Sheet List Table** dialog box. Select the Architectural US table style and type SHEET INDEX in the **Title Text:** text box. Do not show subheaders.
6. Add a **Sheet Description** column. Change the **Sheet Number** heading title to **NUMBER**, the **Sheet Title** heading title to **TITLE**, and the **Sheet Description** title heading to **CONTENT**.
7. Explore the **Subsets and Sheets** tab. Notice that all items are checked, as appropriate for this exercise, to create a sheet list table of all sheets in the sheet set. Pick the **OK** button and insert the table in a location similar to the location shown.



8. Resave and close the file.
9. Keep AutoCAD open for the next exercise, or exit AutoCAD if necessary.