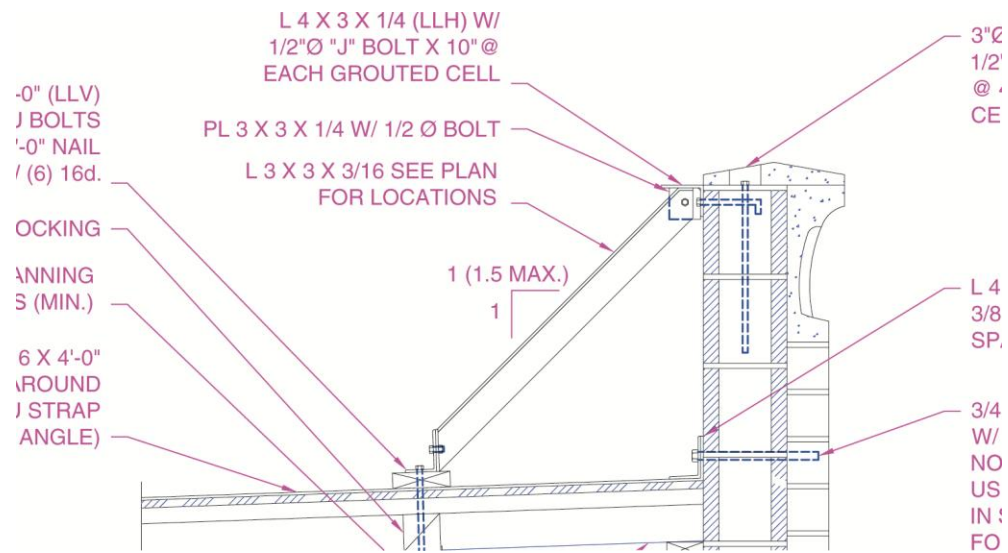
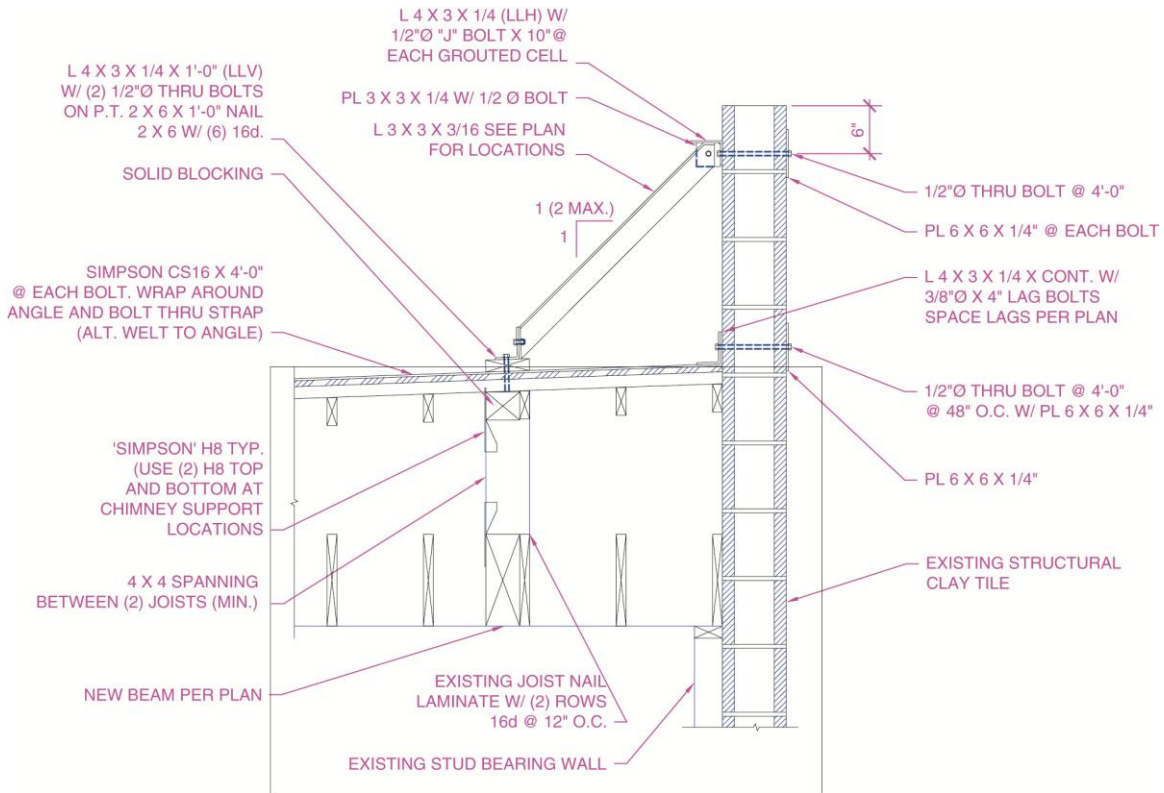


Exercise 31-4

1. Continue from Exercise 31-3 or start AutoCAD.
2. Open the EX31-2 file you saved during Exercise 31-2.
3. Save a copy of EX31-2 as EX31-4. The EX31-4 file should be active.



4. Use the **XCLIP** command to create a rectangular clip of the Detail 5 xref similar to the clip shown.



5. Draw a rectangle similar to the rectangle shown on the Detail 6 xref. Use the **XCLIP** command and the **Select polyline** option to clip the xref using the rectangle as a boundary.
6. Resave and close the file.
7. Keep AutoCAD open for the next exercise, or exit AutoCAD if necessary.