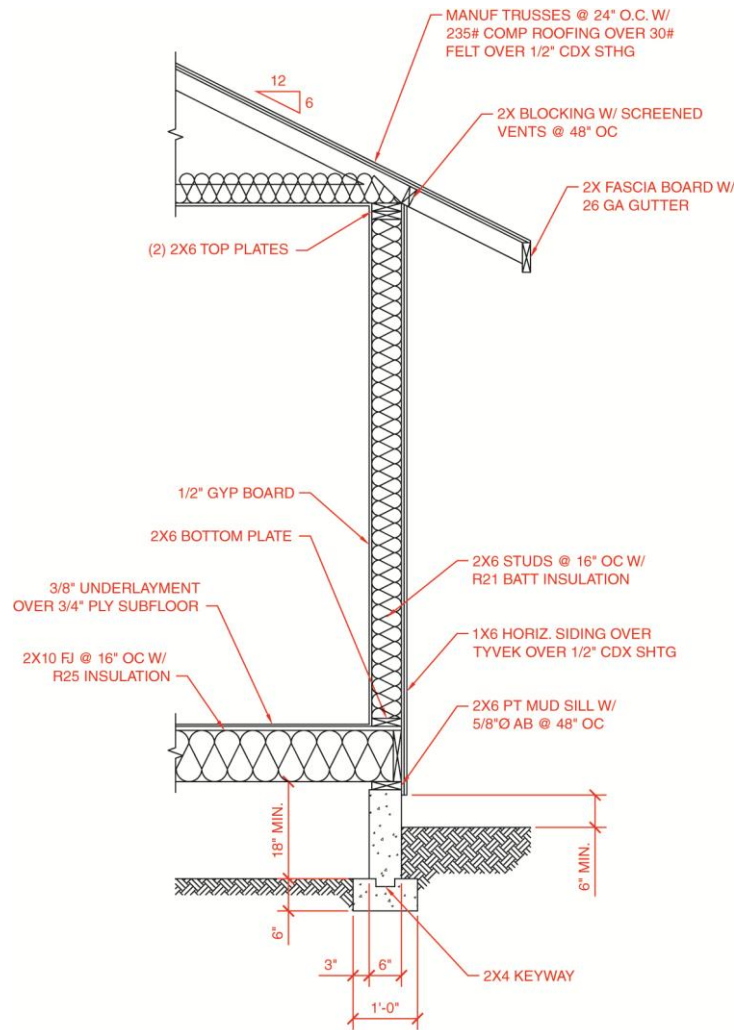


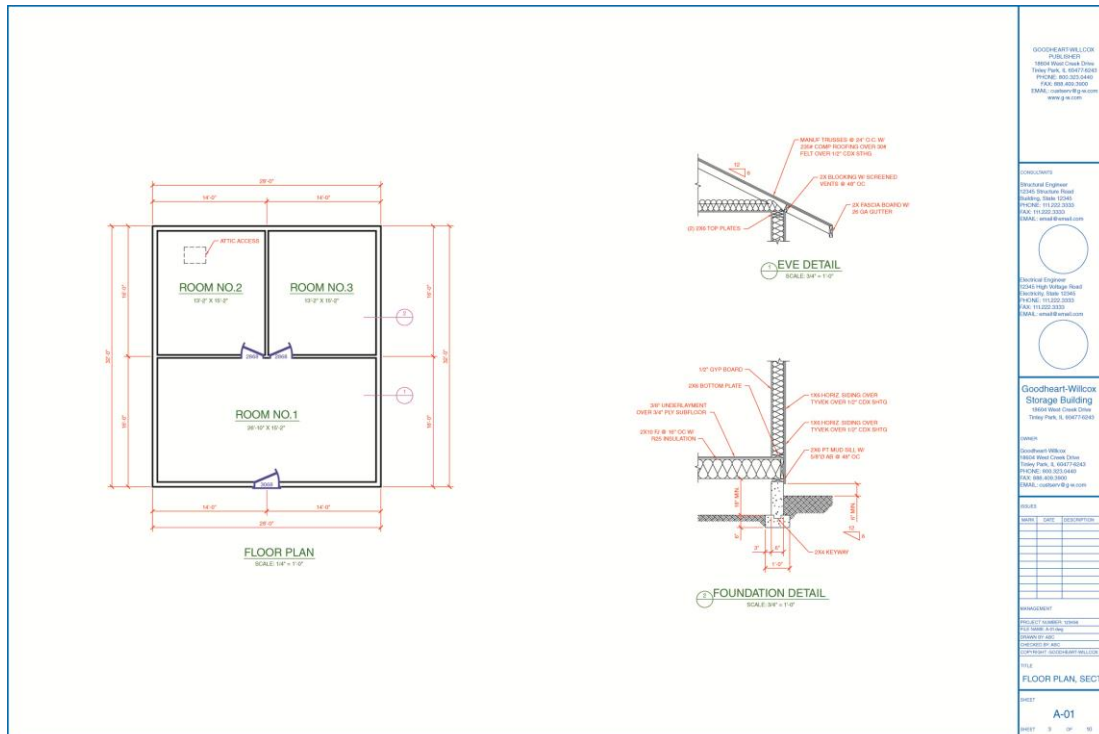
## Exercise 30-6

1. Continue from Exercise 30-5 or start AutoCAD.
2. Open the EX30-5 file you saved during Exercise 30-5.
3. Save a copy of EX30-5 as EX30-6. The EX30-6 file should be active.
4. Set the annotation scale to  $3/4" = 1'-0"$ .
5. Use the **OBJECTSCALE** command to add the current  $3/4" = 1'-0"$  scale to all the annotative wall section objects.



**Wall Section  
A**

6. Use grip editing to position the  $3/4" = 1'-0"$  scale representations as shown in Figure A.



**Complete Drawing  
B**

7. Pick the **ARCH D-SIZE** layout and delete the existing viewport. Create three viewports similar to those shown in Figure B.
8. Activate the left viewport, change the viewport scale to  $1/4" = 1'-0"$ , and pan the view to center the floor plan in the viewport.
9. Thaw the layer in the current viewport on which you placed the BUBBLE blocks. The bubble detail blocks should appear. Lock the viewport.
10. Activate the upper-right viewport, change the viewport scale to  $3/4" = 1'-0"$ , and pan to center the top half of the wall section in the viewport as shown. Lock the viewport.
11. Activate the lower-right viewport, change the viewport scale to  $3/4" = 1'-0"$ , and pan to center the bottom half of the wall section in the viewport as shown. Add the titles to the layout.
12. Turn off the A-ANNO-NPLT layer.

# AutoCAD and Its Applications **BASICS**

13. Adjust the title block information.
14. Pick the **ARCH C-SIZE** layout and notice the different multiview layout created using the same objects as those in the **ARCH D-SIZE** layout.
15. The final exercise should contain drawings that look similar to the drawings shown.
16. Resave and close the file.
17. Keep AutoCAD open for the chapter review and problems, or exit AutoCAD if necessary.