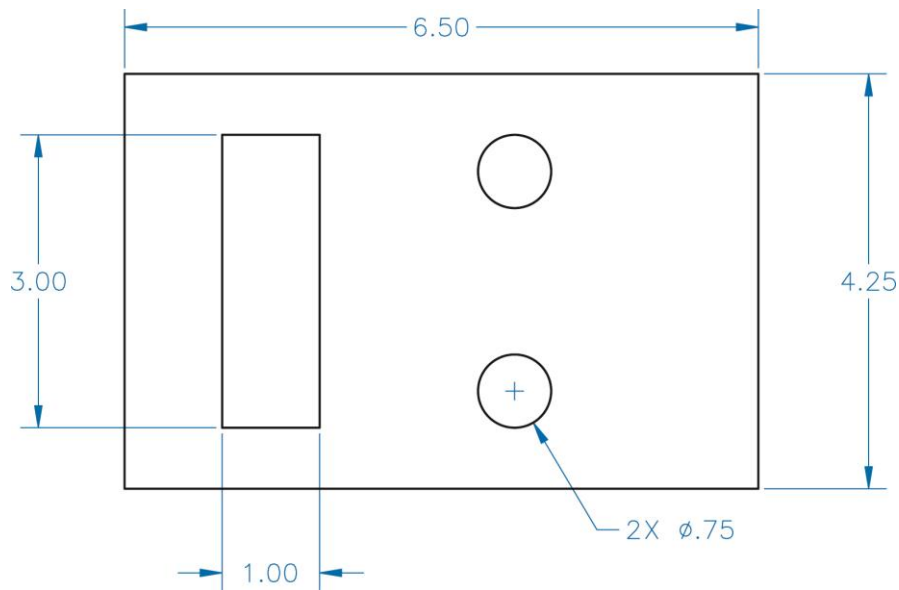


Exercise 15-4

1. Continue from Exercise 15-3 or start AutoCAD.
2. Start a new drawing from scratch or use a decimal-unit template of your choice. Save the drawing as EX15-4.
3. Draw the objects in the figure using the dimensions given. The exact locations of the cutout and holes are not important.



4. Use the **Area** option of the **MEASUREGEOM** command to determine the following.
 - A. The area of the large rectangle.
 - B. The perimeter of the large rectangle.
 - C. The perimeter of the small rectangle.
 - D. The circumference of one circle.
 - E. The area of the large rectangle minus the areas of the three smaller shapes.
5. Resave and close the file.
6. Keep AutoCAD open for the next exercise, or exit AutoCAD if necessary.