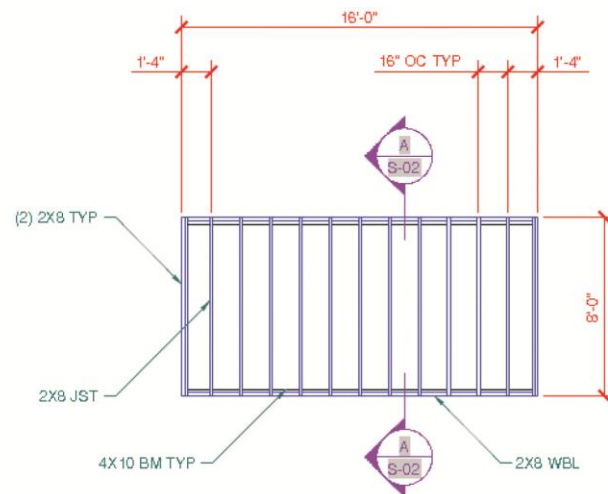
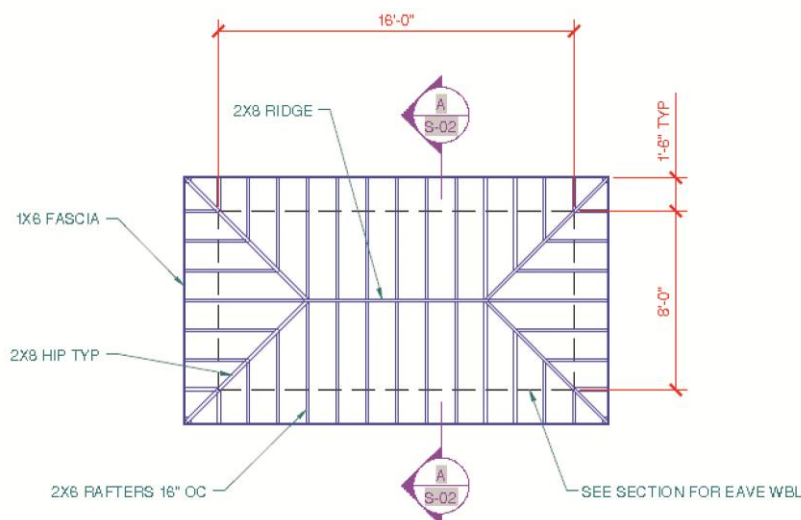


## Exercise 33-5

1. Continue from Exercise 33-4 or start AutoCAD.
2. Save a copy of Foundation Plan.dwg and Roof Plan.dwg from the companion website to the Cappuccino Express folder you created during Exercise 32-2. Open both files and explore the contents. Notice that each file includes a single blank layout. Close the files without saving.
3. Open the Cappuccino Express sheet set you created in Exercise 32-2.
4. Open the Foundation Plan.dwg and Roof Plan.dwg files and add the callout blocks to model space as shown in Figure A using the S-SECT-IDEN layer.



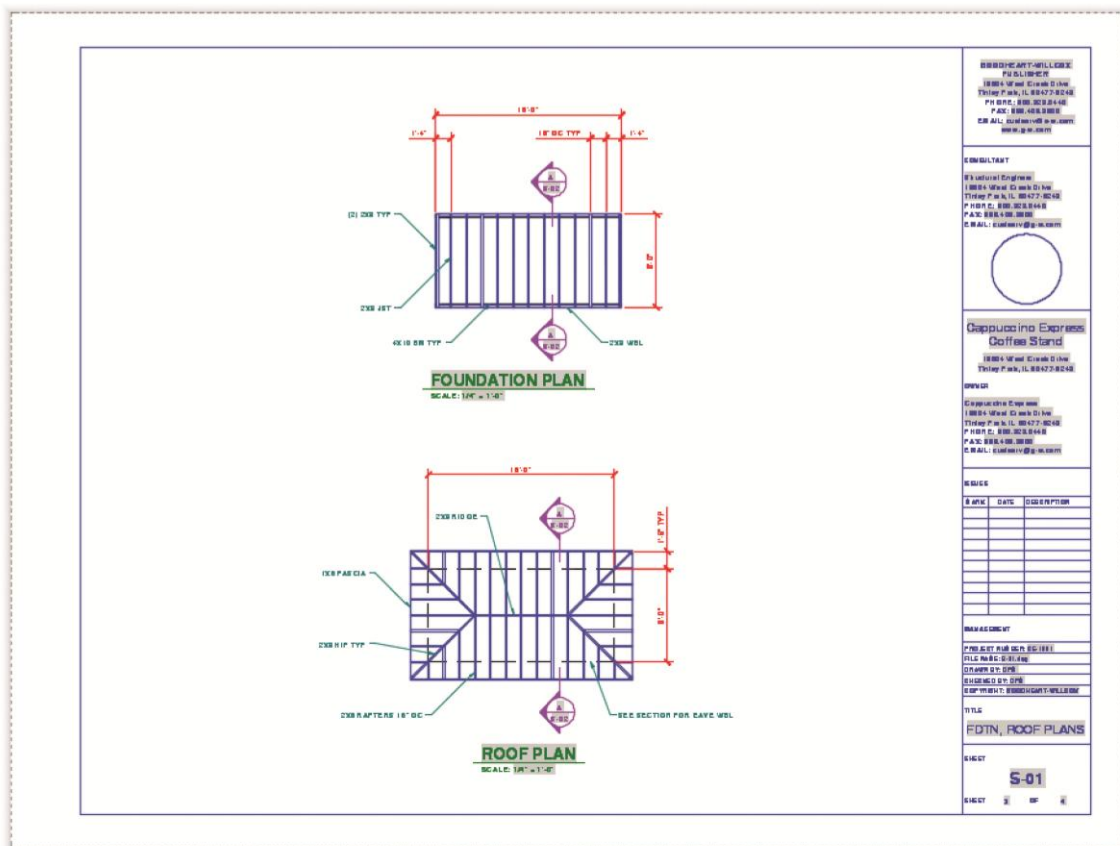
**Foundation Plan**



**Roof Plan**

**A**

5. Activate the **Model Views** tab of the **Sheet Set Manager** and notice that the Cappuccino Express folder is a resource drawing location, as you specified when you created the Cappuccino Express sheet set. Expand the folder to view the contents.
6. Display the **Sheet List** tab of the **Sheet Set Manager** and double-click on the 3 - S-01 sheet to open the file and display the layout. Delete the floating viewport. Set the A-ANNO-NPLT layer current.
7. Return to the **Model Views** tab and drag and drop Foundation Plan.dwg onto the layout. Right-click and select the 1/4" = 1'-0" viewport scale. Pick a location to place the view as shown in Figure B. Move the view label as shown and change its layer to A-ANNO-TITL.
8. Right-click on Roof Plan.dwg in the **Model Views** tab and select **Place on Sheet**. Right-click and select the 1/4" = 1'-0" viewport scale. Pick a location to place the view as shown in Figure B. Move the view label as shown and change its layer to A-ANNO-TITL. Lock the viewport and turn off the A-ANNO-NPLT layer.



**B**

9. View the new sheet views added to the Structural category in the **Sheet Views** tab.
10. Apply the following steps to experience creating and using a model view as a sheet view. The view will not be part of the final sheet set.
  - A. Return to the **Sheet List** tab of the **Sheet Set Manager** and double-click on the 1 - G-01 sheet to open the file and display the layout.
  - B. Activate model space and use the **VIEW** command to create a named model view of the front elevation. Name the view Front Elevation, type Elevations in the **View category:** text box, and use the **Define window** radio button to specify a window around just the front elevation geometry.
  - C. Resave the drawing, activate the **Model Views** tab of the **Sheet Set Manager**, and pick the **Refresh** button to display the changes made to the resource drawing. Expand the G-01.dwg file to view the new model view.
  - D. Return to the layout and drag and drop the Front Elevation view onto the layout. Right-click and select the 1/4" = 1'-0" viewport scale. Pick a location off the sheet to place the view.
  - E. View the new sheet view added to the Elevations category in the **Sheet Views** tab.
  - F. Delete the Front Elevation viewport and title from the drawing. The corresponding sheet view is removed from the Elevations category.
11. Resave and close any open files.
12. Keep AutoCAD open for the next exercise, or exit AutoCAD if necessary.