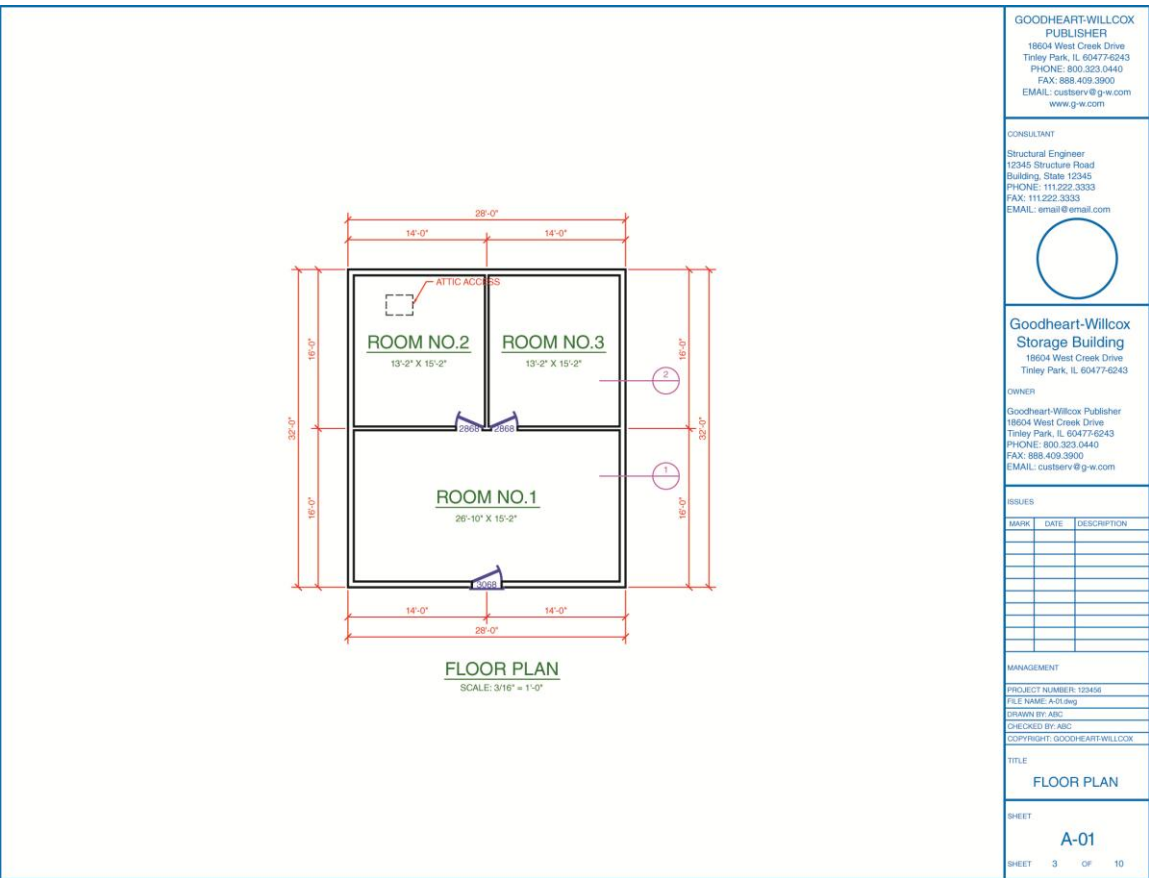


Exercise 30-4

1. Continue from Exercise 30-3 or start AutoCAD.
2. Open the EX30-3 file you saved during Exercise 30-3.
3. Save a copy of EX30-3 as EX30-4. The EX30-4 file should be active.
4. Pick the **ARCH C-SIZE** layout and activate the floating viewport.
5. Unlock the viewport. Turn off **ANNOALLVISIBLE** and **ANNOAUTOSCALE** if they are on.
6. Change the viewport scale to $3/8" = 1'-0"$. The annotative objects should disappear. Change the viewport scale to $1/4" = 1'-0"$. The annotative objects should reappear. Change the viewport scale to $3/8" = 1'-0"$. The annotative objects should disappear.
7. Turn on **ANNOALLVISIBLE** to display the $1/4" = 1'-0"$ scaled annotations. Change the viewport scale to $1/4" = 1'-0"$ and turn on **ANNOAUTOSCALE**.
8. Change the viewport scale to $3/16" = 1'-0"$. With **ANNOAUTOSCALE** on, the $3/16" = 1'-0"$ annotation scale is automatically added to all annotative objects, and the annotations appear in the correct scale.
9. Change the viewport scale to $1/4" = 1'-0"$ and observe the effects of changing the scale.
10. Access the **Properties** palette and select any one of the annotative objects. Notice the default display of the multiple scale representations. Pick the ellipsis (...) button of the Annotative scale property to access the **Annotation Object Scale** dialog box. The object scale list should contain $1/4" = 1'-0"$ and $3/16" = 1'-0"$ scales. Close the dialog box.
11. Change the viewport scale to $3/16" = 1'-0"$ and pan the view to center the floor plan in the viewport.
12. Lock the viewport. Move the title if necessary. Turn off the A-ANNO-NPLT layer if it is on.

13. Change the title scale to $3/16" = 1'-0"$. The final exercise should look similar to the drawing shown.



14. Resave and close the file.
15. Keep AutoCAD open for the next exercise, or exit AutoCAD if necessary.