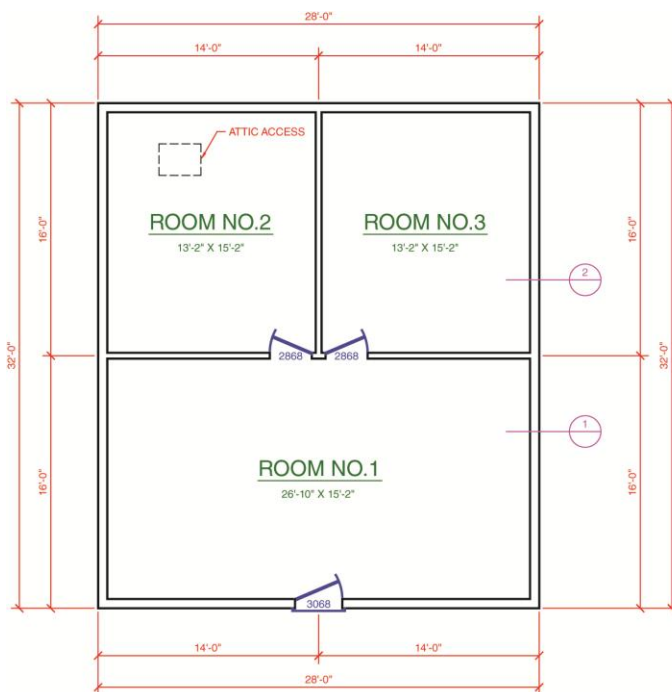


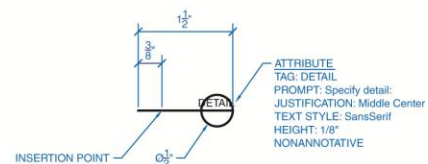
AutoCAD and Its Applications **BASICS**

Exercise 30-2

1. Continue from Exercise 30-1 or start AutoCAD.
2. Open the EX30-1 file you saved during Exercise 30-1.
3. Save a copy of EX30-1 as EX30-2. The EX30-2 file should be active.
4. Ensure that the **MSLTSCALE** system variable is set to 1.
5. Set the annotation scale to $1/4" = 1'-0"$.
6. Enter an **LTSCALE** value of .25 and notice the effects on your drawing in model space.



Floor Plan



BUBBLE Block

7. Use single-line text to add the $1/8"$ door identification labels to the floor plan.
Use multiline text to add the room identification labels to the floor plan. The room name text is $1/4"$ tall and the room size text is $1/8"$ tall.
8. Add the floor plan dimensions.
9. Use a multileader to add the attic access note.

10. Create the schematic block using the information provided. Make the block annotative, but do not include the attribute in the block. Name the block BUBBLE. Insert the block twice, as shown, on a separate layer, such as A-SECT-IDEN.
11. Resave and close the file.
12. Keep AutoCAD open for the next exercise, or exit AutoCAD if necessary.