

AutoCAD and Its Applications **BASICS**

Supplemental Material—Chapter 7

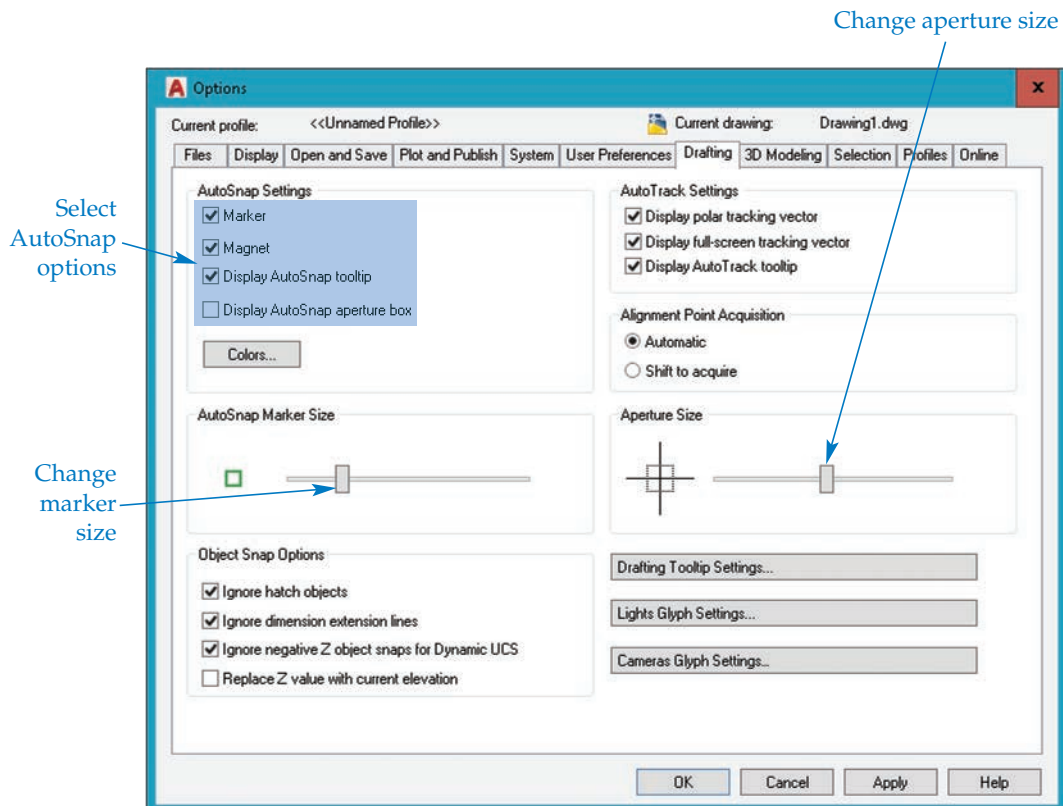
AutoSnap and AutoTrack Options

You can customize the appearance and function of the AutoSnap and AutoTrack features using settings in the **Drafting** tab of the **Options** dialog box. See [Figure 7A-1](#). An easy way to access the **Drafting** tab of the **Options** dialog box is to pick the **Options...** button in the lower-left corner of the **Drafting Settings** dialog box.

AutoSnap Options

The **AutoSnap Settings**, **AutoSnap Marker Size**, and **Aperture Size** areas of the **Drafting** tab in the **Options** dialog box control AutoSnap options. Toggle the AutoSnap marker display using the **Marker** check box. Move the slider in the **AutoSnap Marker Size** area to change the marker size. At higher screen resolutions, a larger marker size improves visibility.

Figure 7A-1.
Setting AutoSnap features.



The default marker color is green. If the color is difficult to see, pick the **Colors...** button to access the **Drawing Window Colors** dialog box. See [Figure 7A-2](#). Highlight the **2D model space** selection in the **Context:** list, followed by **2d Autosnap marker** in the **Interface element:** list. Access the **Color:** drop-down list and select a color. Pick **Apply & Close** to return to the **Options** dialog box.

Toggle the AutoSnap magnet on and off using the **Magnet** check box. When active, the magnet snaps the crosshairs to the specified object snap point. Toggle the tooltip display on and off using the **Display AutoSnap tooltip** check box.

When you select a point using object snaps, the crosshairs must be within a specific aperture range of a candidate point before AutoCAD can locate the point. The aperture square area is invisible by default. To display the aperture, check the **Display AutoSnap aperture box** check box. A visible AutoSnap aperture box can be helpful when you are first learning to work with object snap. To change the size of the aperture, as shown in [Figure 7A-3](#), move the slider in the **Aperture Size** area. Keep in mind that the aperture and the pick box are different. The aperture displays on-screen when object snap modes are active. The pick box appears on-screen for any command that offers the Select objects: prompt.

Figure 7A-2.
Changing the color of the AutoSnap marker.

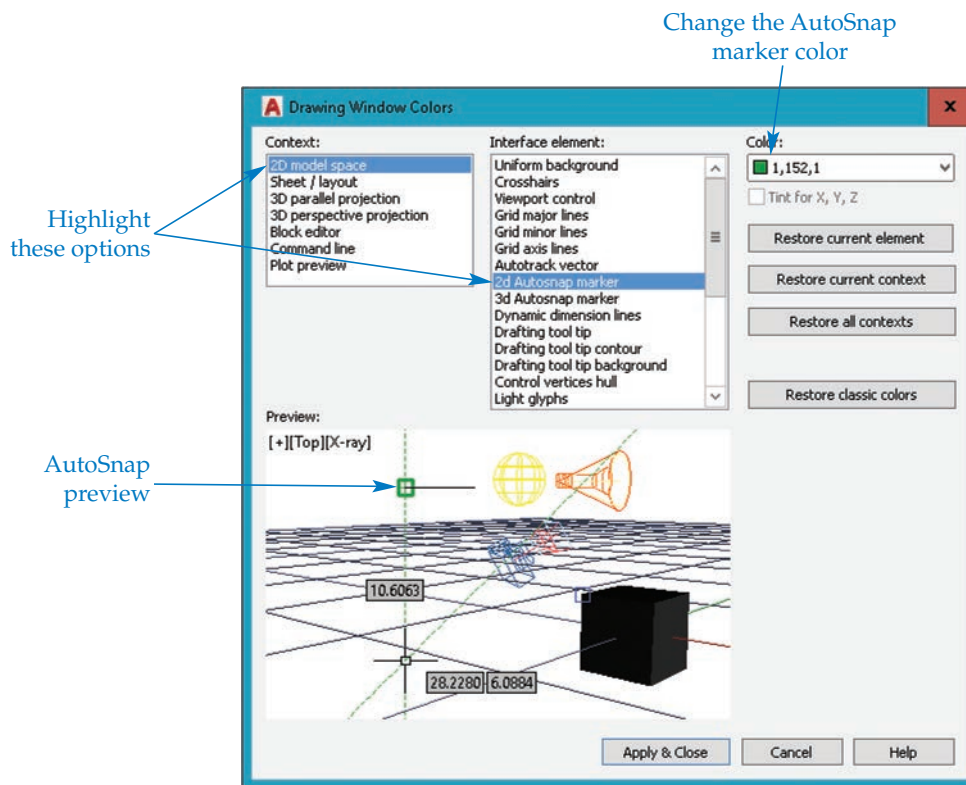
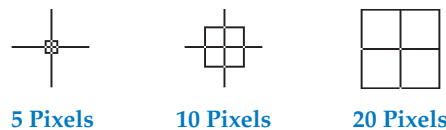


Figure 7A-3.
Aperture box size is measured in pixels. The three examples here are not shown at actual size; they are provided to show the size relationships among different settings.



NOTE

The **Ignore hatch objects** check box determines whether you can snap to hatch objects. The **Ignore dimension extension lines** check box determines whether you can snap to the extension lines of dimension objects. You will learn about hatching and dimensioning later in the textbook.

AutoTrack Options

The **AutoTrack Settings** and **Alignment Point Acquisition** areas of the **Drafting** tab in the **Options** dialog box control AutoTrack options. Refer again to [Figure 7A-1](#). Use the **Display polar tracking vector** check box to toggle the display of the polar tracking vector path.

Use the **Display full-screen tracking vector** check box to extend the alignment path for object snap tracking across the length of the drawing window. If you do not check this box, the alignment paths appear only between the acquired point and the crosshairs location. Polar tracking vectors always extend from the original point to the extents of the drawing area. Pick the **Display AutoTrack tooltip** check box to display a temporary tooltip with the AutoTrack alignment paths.

The options in the **Alignment Point Acquisition** area determine how you select object snap tracking alignment paths. Pick the **Automatic** radio button to acquire points whenever you hover over an object snap point. If you pick the **Shift to acquire** radio button, you are required to press [Shift] to acquire an object snap point and use object snap tracking. AutoSnap markers are still displayed, and you can use normal object snaps without pressing [Shift]. If many running object snaps are set, you can use this option to reduce the number of paths.

Adjust AutoTrack vector color by picking the **Colors...** button to access the **Drawing Window Colors** dialog box. Highlight the **2D model space** selection in the **Context:** list, followed by **Autotrack vector** in the **Interface element:** list. Access the **Color:** drop-down list, and select a color. Pick **Apply & Close** to return to the **Options** dialog box.

Activity 7A-1

Perform the following steps to familiarize yourself with the various AutoSnap and AutoTrack options.

1. Start a new drawing from scratch or use a template of your choice.
2. Open the **Drafting Settings** dialog box and then the **Options** dialog box.
3. Move the **AutoSnap Marker Size** slider and watch the image change to represent the marker size.
4. Change the marker color to Red.
5. Use the newly revised marker size and color to draw objects of your choice with the object snaps.
6. Display the aperture.
7. Make the aperture small. Draw lines to existing objects using the object snap modes of your choice.
8. Make the aperture large. Again, draw lines to the existing objects using the object snap modes of your choice.
9. Observe the difference in aperture size. Determine your personal preference among the small, large, and default sizes.
10. Close the drawing without saving changes.