

# AutoCAD and Its Applications **BASICS**

## Supplemental Material—Chapter 5

# Layer Settings

The **Layer Settings** dialog box, shown in **Figure 5C-1**, provides additional layer and **Layer Properties Manager** settings. Pick the **Settings** button of the **Layer Properties Manager** to access the **Layer Settings** dialog box.

## New Layer Notification

The **New Layer Notification** area includes options to help manage new layers. A list of the layers in a drawing is saved with the drawing. When you create a new layer or a new layer comes into the drawing from another drawing, AutoCAD can evaluate the new layer against the existing list of layers to form unreconciled layers.

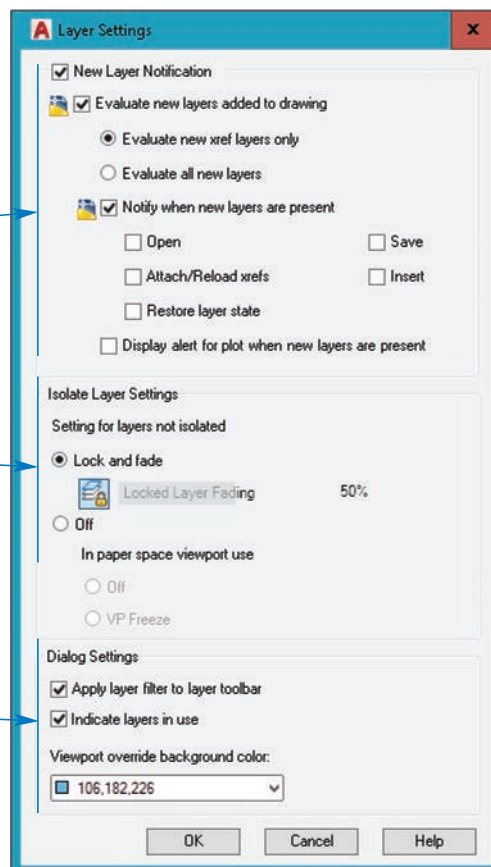
**Figure 5C-1.**

The **Layer Settings** dialog box provides options for processing new layers, layer isolation settings, and display settings.

Use these options  
to evaluate and  
provide notification  
of layers

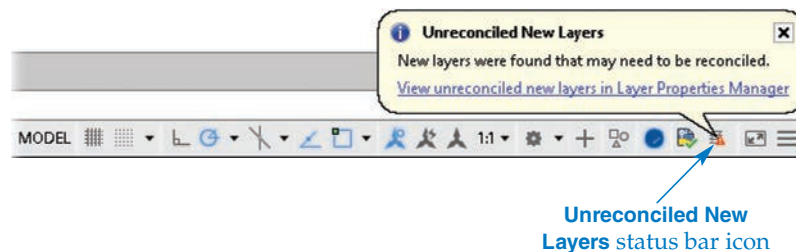
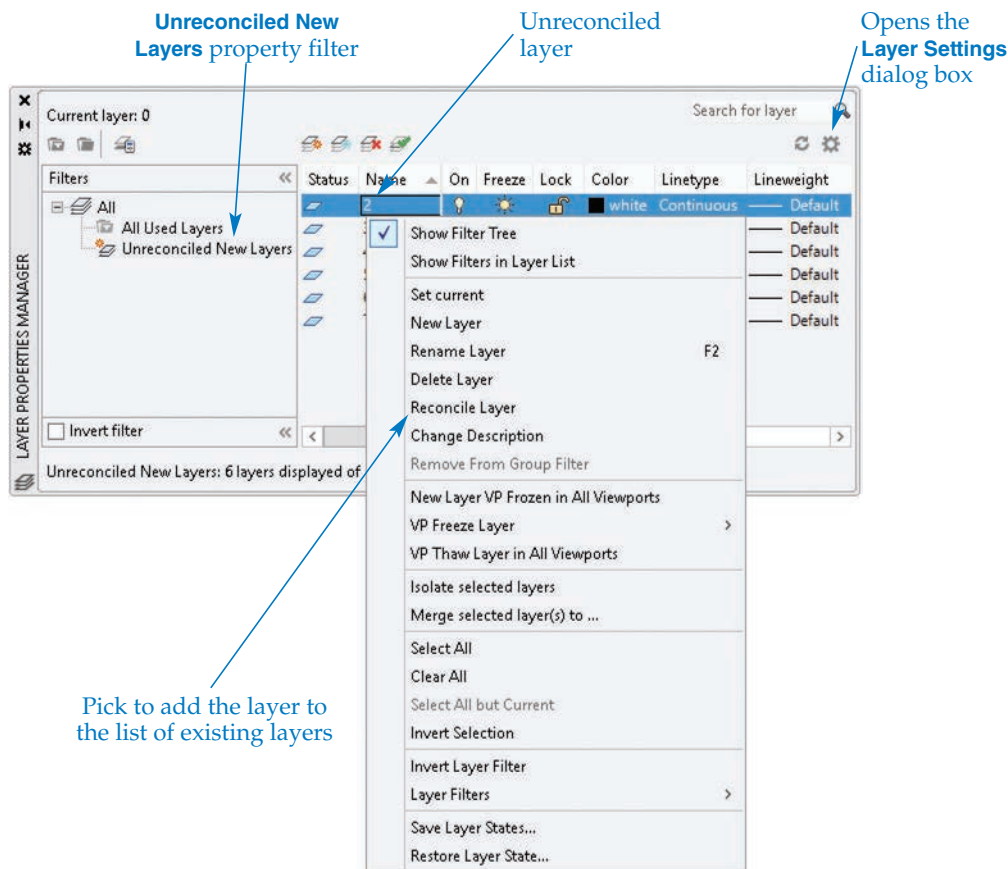
Set options for  
isolating layers

Set display options  
for the **Layer  
Properties Manager**



To evaluate new layers, pick the **Evaluate new layers added to drawing** check box. Then pick the appropriate radio button to choose to evaluate all new layers or only those associated with external references. You can also specify whether notification appears in the status bar. Check the **Notify when new layers are present** check box and select the appropriate check boxes to specify when to display notification. For example, pick the **Open** check box to notify of new layers every time you open the file. See [Figure 5C-2](#). To add the new layer to the list of existing layers, right-click on the new layer in the layer list area of the **Layer Properties Manager** and select **Reconcile Layer**.

**Figure 5C-2.**  
Reconciling a new layer.



## Layer Isolation Settings

The **Isolate Layer Settings** area of the **Layer Settings** dialog box includes options for locked layer fading used with the **LAYISO (Layer Isolate)** command. The **Lock and fade** radio button is selected by default and provides the same **Locked Layer Fading** button and **Locked Layer Fading** slider as in the expanded **Layers** panel on the **Home** ribbon tab. The additional options in the **Isolate Layer Settings** area are the same as the options available for the **LAYISO** command.

## Display Options

Use the **Dialog Settings** area of the **Layer Settings** dialog box to set **Layer Properties Manager** display options. Check **Apply layer filter to layer toolbar** to display only the layers matching the current filter in the **Layer** drop-down list in the **Layers** panel of the **Home** ribbon tab. If this box is left unchecked, all layers are available in the **Layer** drop-down list. The **Indicate layers in use** check box controls the function of the display status icon. When **Indicate layers in use** is unchecked, all status icons appear as a blue sheet of paper. When you check **Indicate layers in use** and the drawing includes objects assigned to a layer, the status icon is a blue sheet of paper. A gray sheet of paper indicates that there are no objects on the layer. The **Viewport override background color:** option allows you to select the background color for layers to which layout viewport overrides have been applied.