

# AutoCAD and Its Applications **BASICS**

## Supplemental Material—Chapter 1

# Input Search Options

Use the **INPUTSEARCHOPTIONS** command to adjust input search preferences using the **Input Search Options** dialog box, shown in **Figure 1A-1**. You can also access the **Input Search Options** dialog box by right-clicking on the command line and selecting **Input Search Options...**

Type  
**INPUTSEARCH-  
OPTIONS**

INPUTSEARCHOPTIONS

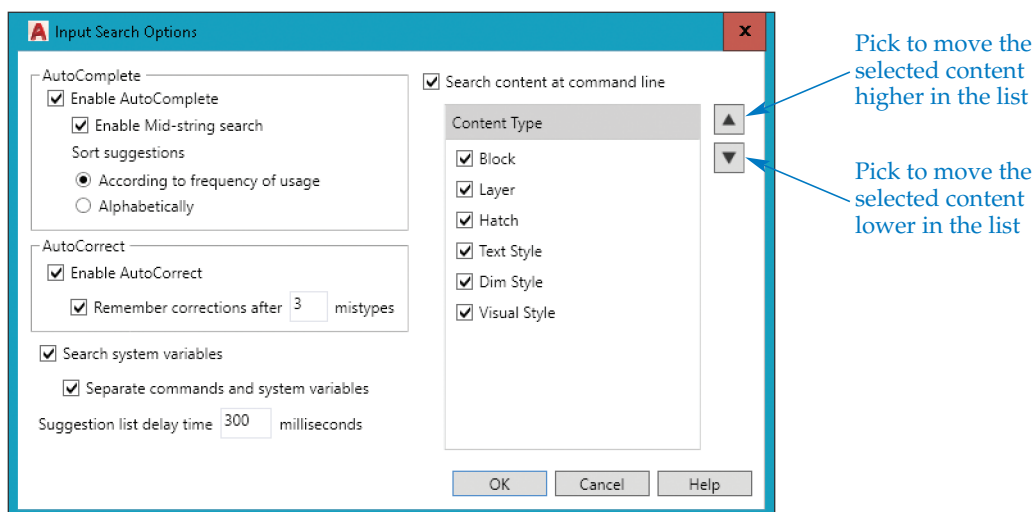
The **Input Search Options** dialog box offers the same settings available from the **Input Settings** cascading menu that displays when you right-click on the command line or pick the **Customize** button on the command line. Use the corresponding check boxes to toggle AutoComplete, AutoCorrect, system variable search, content search, and mid-string search on and off. Specify a delay time for the suggestion list in milliseconds in the **Suggestion list delay time** text box.

The **Input Search Options** dialog box also includes other input search controls. If you enable AutoComplete, picking the **According to frequency of usage** radio button sorts the suggestion list according to commonly used commands. As you work, the suggestion list adapts to sort suggestions based on previously used commands. This is the default setting. Pick the **Alphabetically** radio button to always sort the suggestion list alphabetically.

If you enable AutoCorrect, the **Remember corrections after *n* mistypes** check box and text box are available. These controls allow you to specify the number of incorrect spellings of a command or system variable necessary to display the potentially correct command or system variable in the suggestion list. These controls are active by default and the default number of incorrect spellings is 3.

The **Separate commands and system variables** check box is selected by default. When selected, AutoCAD creates separate categories in the command line suggestion list for commands and system variables.

**Figure 1A-1.**  
The **Input Search Options** dialog box.



Use the **Content Type** list box to select what items to search for when the content search tool is enabled. Select the content types from the list and then use the arrow buttons to sort the list. The higher up the content type is in the **Content Type** list box, the sooner it will appear in the suggestion list.