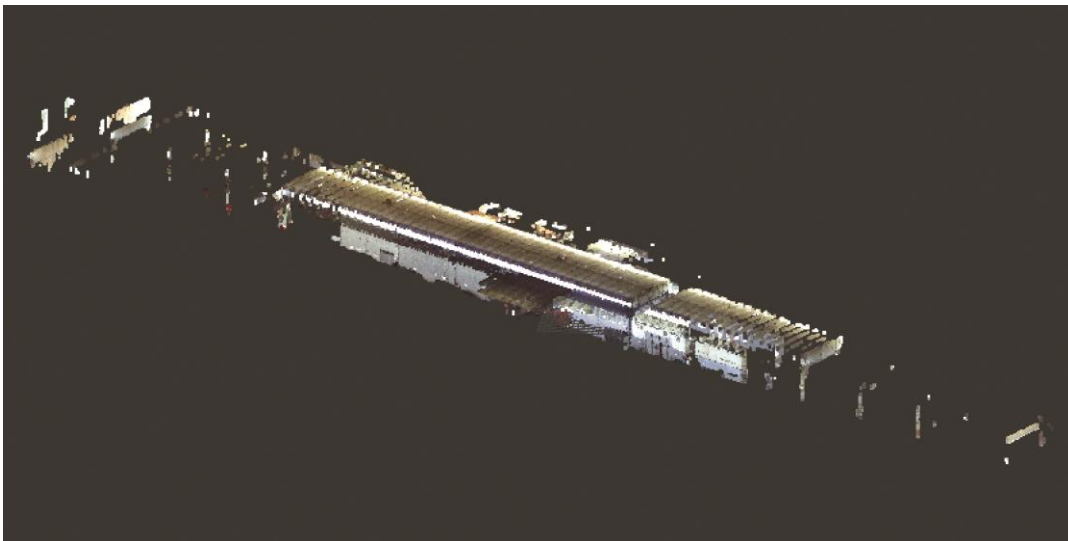


## Exercise 15-1

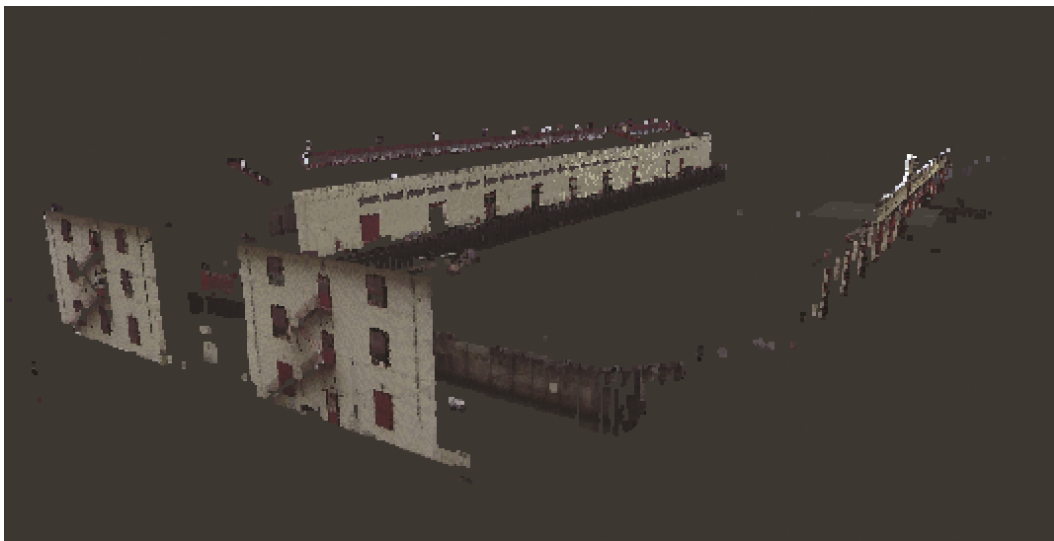
In this exercise, you will import scan files from two different projects into Autodesk ReCap Pro. You will register and index the files for each project.

1. Download the Pier9 folder for this exercise from the companion website. Copy the folder to a location of your choice. There are a total of four subfolders in the Pier9 folder containing raw scan files. The scan files are from a larger set of scans and represent a portion of the design project.
2. Open Autodesk ReCap Pro and create a new project. Name the project Pier9\_Design.
3. Import the Pier9 folders into Autodesk ReCap Pro. Import the folders by selecting the Pier9 folder or by dragging and dropping the four subfolders into Autodesk ReCap Pro. The import will take a few minutes.
4. Select **Auto register scans** to register the scans automatically. When prompted to merge remaining groups and scans, select **OK** and then select **Merge scan**. Move the cursor over the review icon when it appears and select **Approve**.
5. Select **Index scans** to start the indexing process. Indexing will take a few minutes.
6. Select **Launch project** to view the scans. Use the navigation tools on the **Project** screen to adjust the view. The scans display the initial design of the pier. Refer to the illustration below.
7. Select **Save** from the **Home** tile menu to save the project.



*(Pier 9, San Francisco)*

8. Download the Fort Mason folder for this exercise from the companion website. Copy the folder to a location of your choice. The folder contains a total of four raw scan files. The scan files are from a larger set of scans and represent a portion of the design project.
9. Create a new project in Autodesk ReCap Pro. Name the project Fort Mason\_Design.
10. Import the Fort Mason files into Autodesk ReCap Pro. Import the files by selecting the files or by dragging and dropping them into Autodesk ReCap Pro. The import will take a few minutes.
11. Select **Auto register scans** to register the scans automatically.
12. Select **Index scans** to start the indexing process. Indexing will take a few minutes.
13. Select **Launch project** to view the scans. Use the navigation tools on the **Project** screen to adjust the view. Refer to the illustration below.
14. Select **Save** from the **Home** tile menu to save the project.



*(Pier 2 at Fort Mason Center for Arts & Culture)*