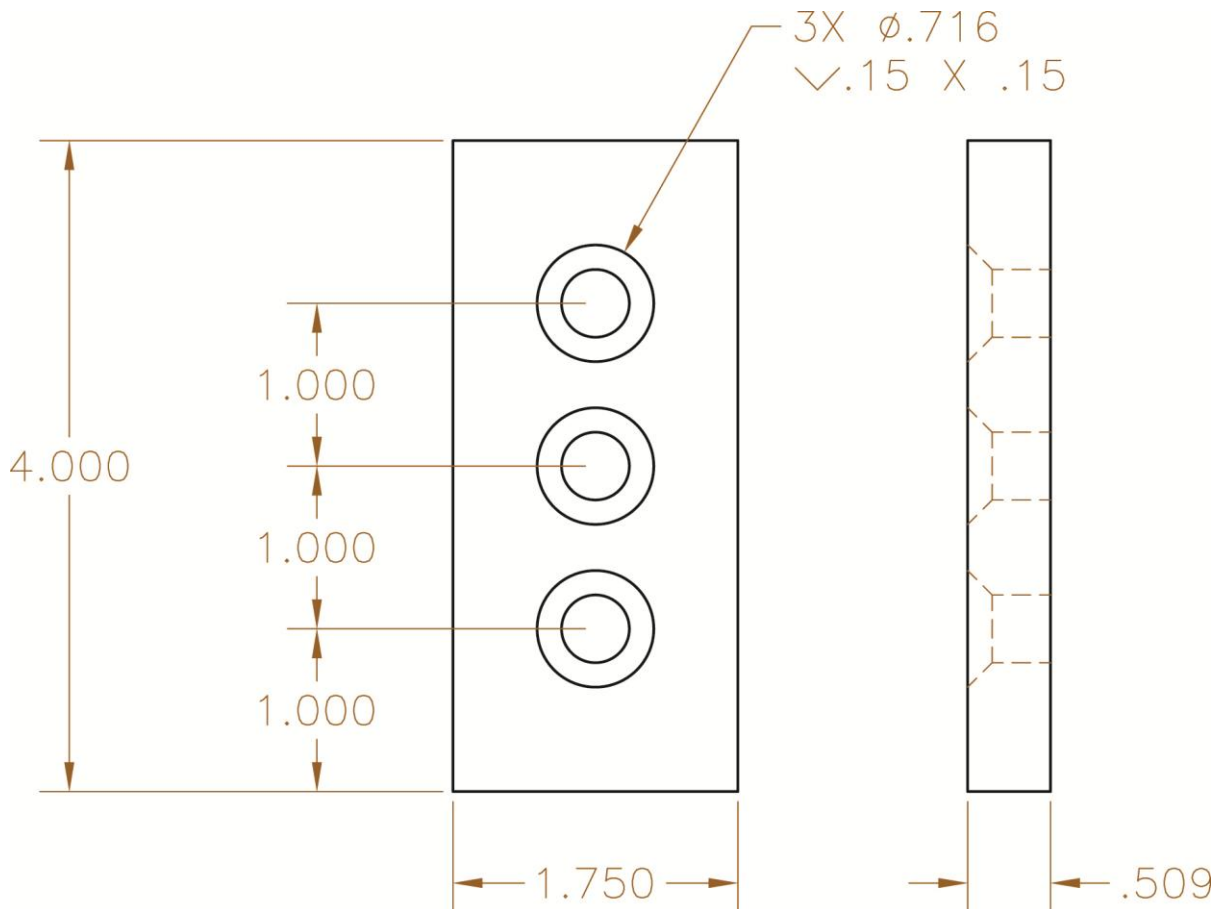


Exercise 14-9

1. Begin a new drawing.
2. Construct the object shown in the illustration below.



3. Create a section object using the **Face** option of the **SECTIONPLANE** command. The **Type** option should be set to the default **Plane** option.
4. Using the **MOVE** command, move the section object so that it cuts through the centers of all three holes. Note: You may need to turn off live sectioning for object snaps to correctly work. If you do so, then turn live sectioning back on after moving the section object.
5. Delete the section object.

6. Draw another section object by picking two points. The **Type** option should be set to the default **Plane** option. The section plane should cut through the centers of all three holes. Turn on live sectioning, if it is not already on.
7. Delete the section object.
8. Use the **Draw section** option to construct a section object that cuts through the center of the first hole at 90°. The **Type** option should be set to the default **Plane** option. Turn on live sectioning, if it is not already on.
9. Save the drawing as EX14-9.

To continue practicing solid model sectioning, complete act14-09.dwg available on the companion website.