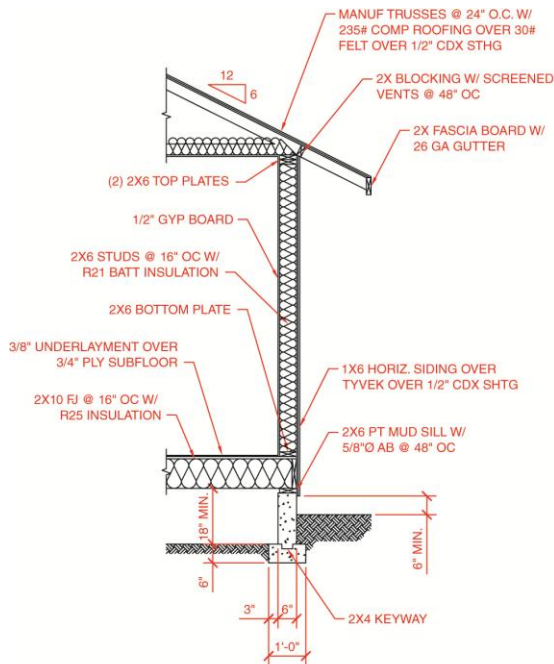
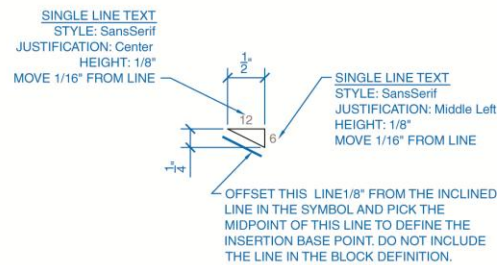


Exercise 30-5

1. Continue from Exercise 30-4 or start AutoCAD.
2. Open the EX30-3 file you saved during Exercise 30-3.
3. Save a copy of EX30-3 as EX30-5. The EX30-5 file should be active.
4. Set the annotation scale to $1/2" = 1'-0"$.



Wall Section

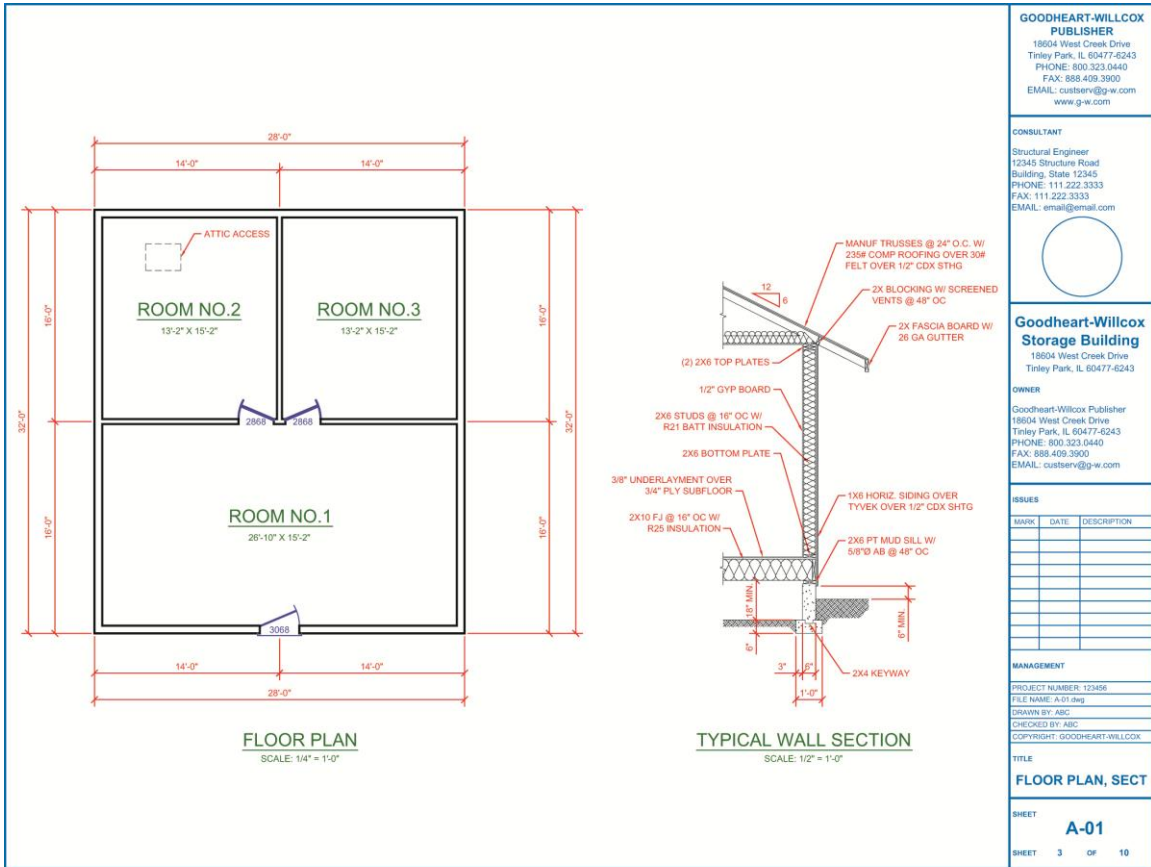


PITCH Block

A

5. Add annotative hatch patterns to the wall section in model space. See Figure A.
6. Add the linear dimensions and specific notes shown.

7. Create the schematic block using the information provided. Name the block PITCH and make it annotative. Insert the block as shown.



Complete Drawing
B

8. Pick the **ARCH C-SIZE** layout and delete the existing viewport. Create two viewports similar to those shown.
9. Activate the left viewport, change the viewport scale to $1/4" = 1'-0"$, and pan the view to center the floor plan in the viewport.
10. Freeze the layer in the current viewport on which you placed the BUBBLE blocks. The bubble detail blocks should disappear. Lock the viewport.
11. Activate the right viewport, change the viewport scale to $1/2" = 1'-0"$, and pan the view to center the wall section in the viewport. Lock the viewport. Add the titles and scale data shown to the layout. Turn off the A-ANNO-NPLT layer. Adjust the title block as needed.
12. Resave and close the file.
13. Keep AutoCAD open for the next exercise, or exit AutoCAD if necessary.