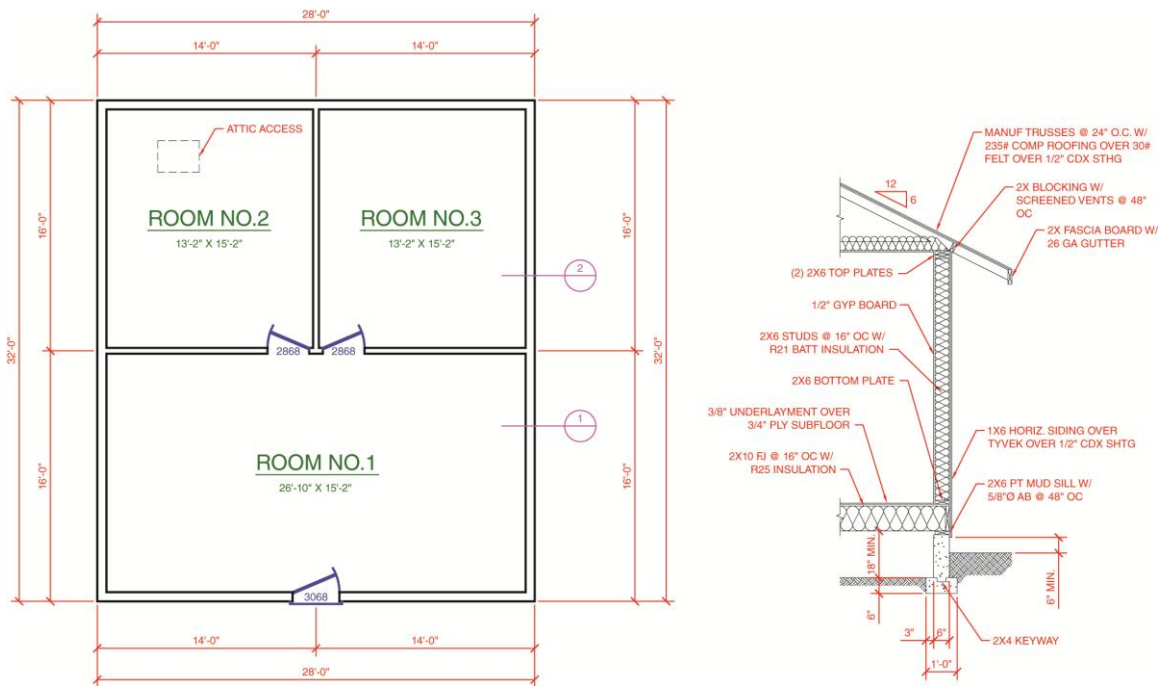


## Exercise 30-1

1. Start AutoCAD if it is not already started.
2. If you have not already done so, use the information in the Template Development feature on the companion website to create the Architectural-US template and use this template to begin a new drawing. Alternatively, use the supplied Architectural-US template located on the companion website. Save the drawing as EX30-1.



3. Draw a floor plan and wall section similar to those shown at full scale in model space. Create the drawing features only. Do not add annotative objects, including annotations or hatch patterns.
4. Make the following styles current: the Architectural US Annotative dimension style, the SansSerif Annotative text style, and the Architectural US Annotative multileader style.
5. Resave and close the file.
6. Keep AutoCAD open for the next exercise, or exit AutoCAD if necessary.