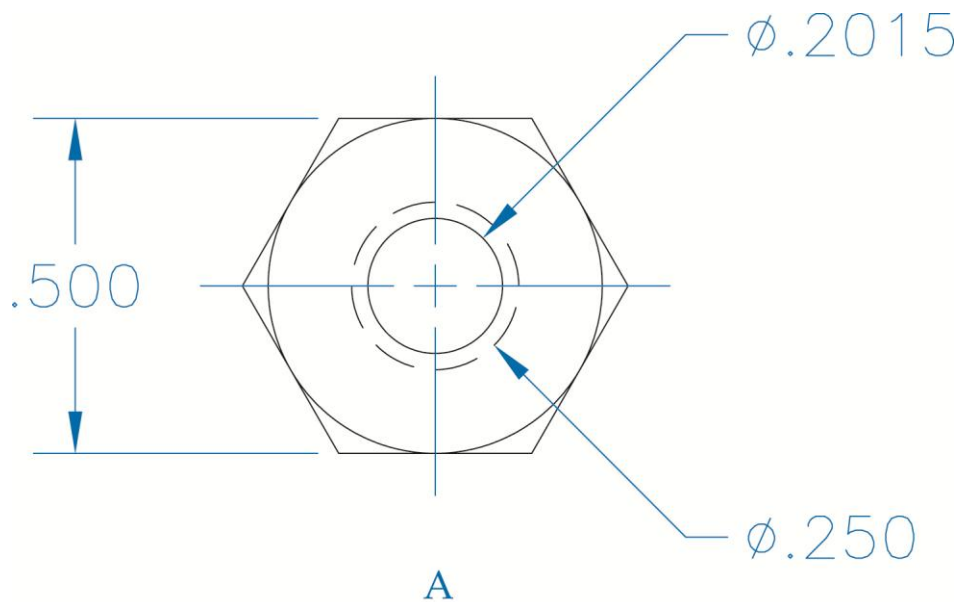


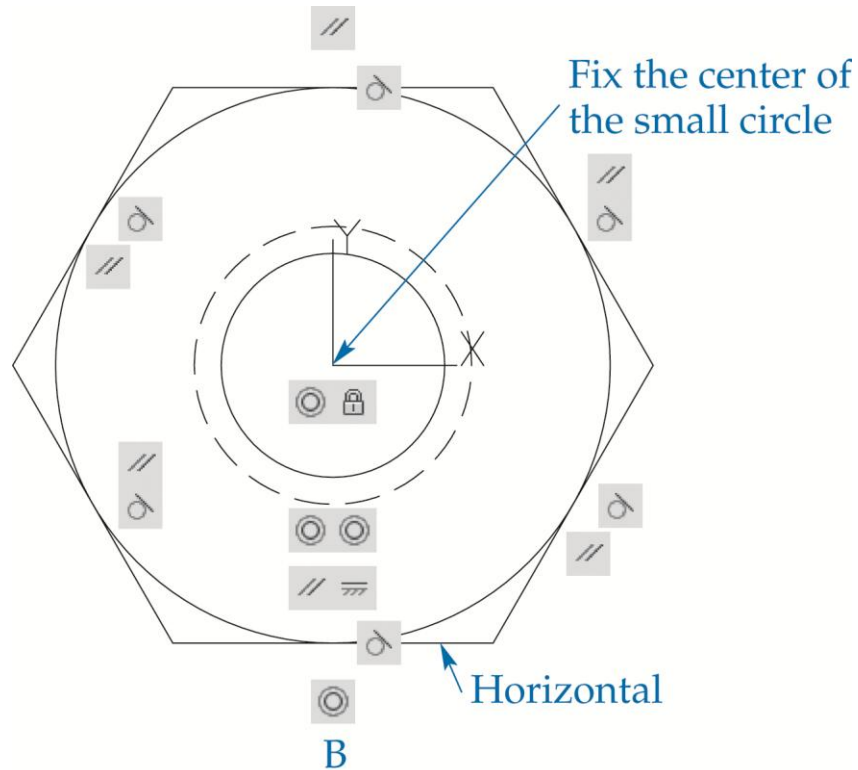
## Exercise 27-3

1. Continue from Exercise 27-2 or start AutoCAD.
2. Start a new drawing from scratch or use a decimal-unit template of your choice. Save the drawing as EX27-3.
3. Use the **POLYGON** and **CIRCLE** commands to draw the front view of the heavy hex nut exactly as shown. Do not add dimensions or centerlines.



4. Create a block named HEAVY HEX NUT and open it in the **Block Editor**.

- Use the **Concentric**, **Fix**, **Horizontal**, **Parallel**, and **Tangent** options of the **GEOMCONSTRAINT** command to add the constraints shown. The circles are concentric, the opposite sides of the hexagon are parallel, and the large circle is tangent to each side of the polygon.



- Save the block and exit the **Block Editor**.
- Resave and close the file.
- Keep AutoCAD open for the next exercise, or exit AutoCAD if necessary.