

Name _____ Date _____

Chapter 10 Lab Investigation: Blood

Purpose

In this activity you will learn more about blood by identifying its components.

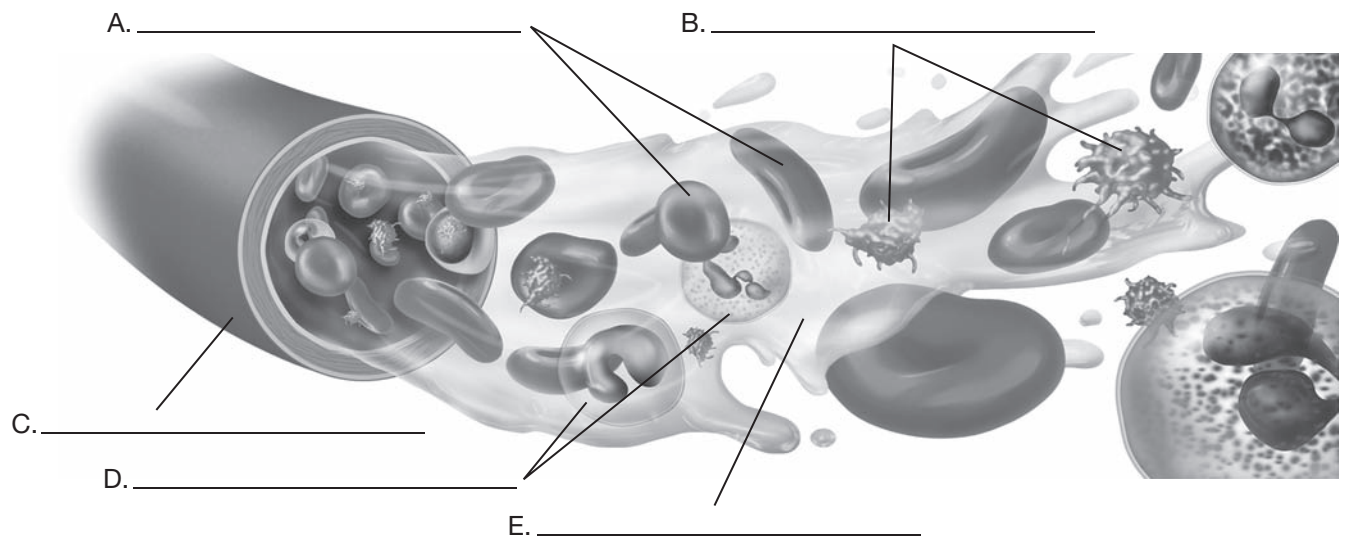
Materials

your text book, your body

Procedure

Blood Components

1. Label the following blood components in the diagram below: platelets, white blood cells, plasma, red blood cells, blood vessel.



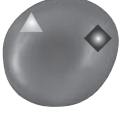
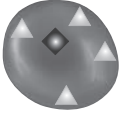

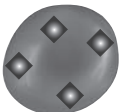
2. What process was used to change a whole blood sample into what is shown in the test tube diagram below? _____
3. What is the blood sample called after this process (#2)? _____
4. Draw an arrow to and label the following portions in the tube: buffy coat, formed elements, plasma.
5. What percent of this sample is made up of red blood cells? _____
6. What percent of this sample is made up of white blood cells and platelets? _____
7. What percent of this sample is plasma? _____



Blood Type

Determine the blood type from the following erythrocytes. In the chart below, list the blood type, the antigens present on the surface of the erythrocyte, and the antibodies in the plasma.

Key: ▲ "A antigen" ◆ "B antigen"

	Blood Type	Antigen(s)	Antibodies
			
			
			
			

Conclusions

List the components of the buffy coat.

1. _____
2. _____

List the plasma proteins and function of each.

3. _____
4. _____
5. _____
6. _____
7. _____

List the granular leukocytes.

8. _____
9. _____
10. _____

List the agranular leukocytes.

11. _____
12. _____
13. What blood type is the universal donor? _____
14. What blood type is the universal recipient? _____
15. What blood type is not possible in the offspring of two AB parents? _____