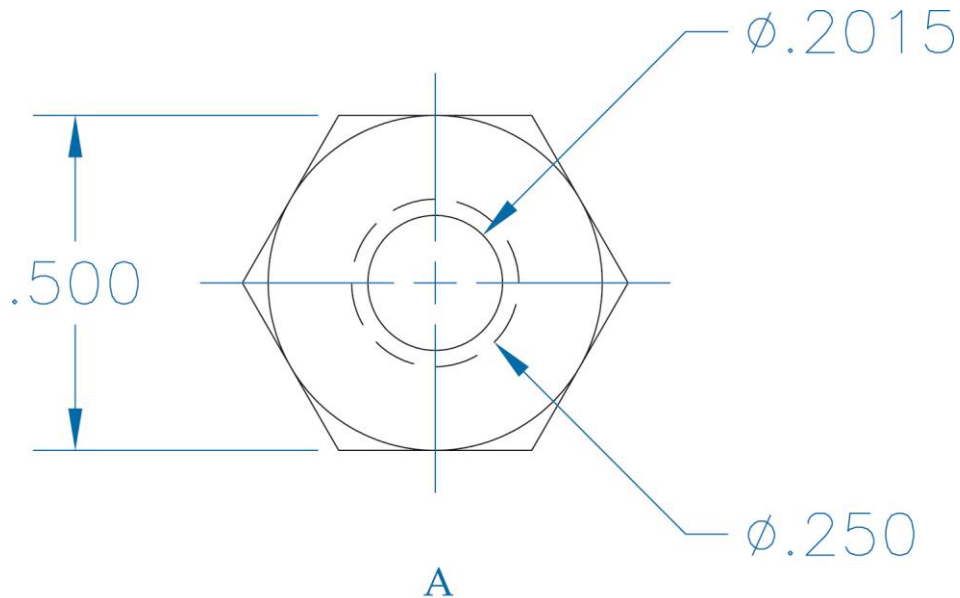


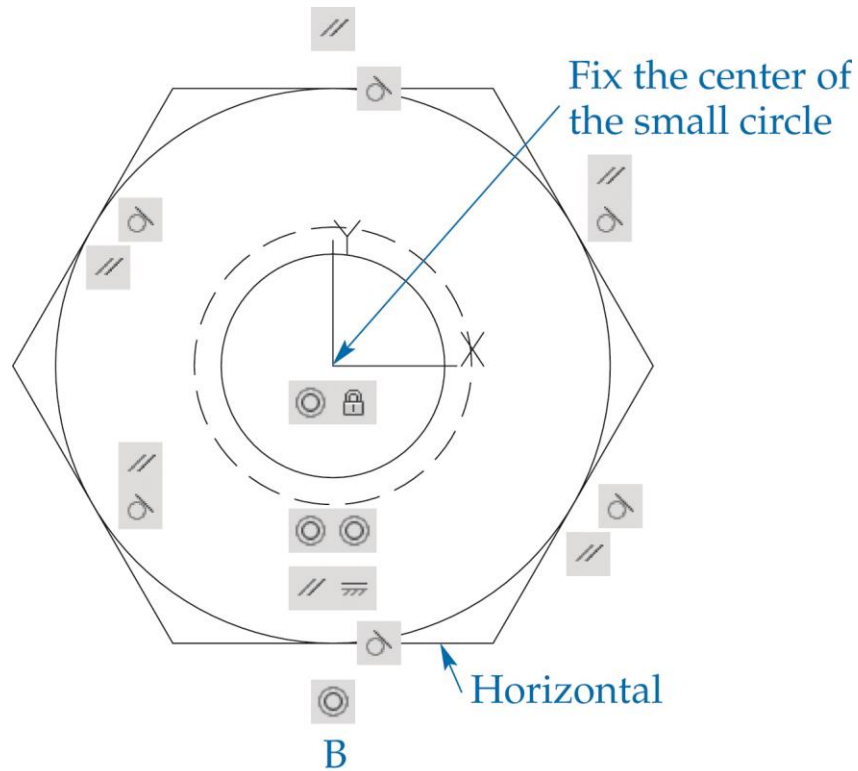
Exercise 27-3

1. Continue from Exercise 27-2 or start AutoCAD.
2. Start a new drawing from scratch or use a decimal-unit template of your choice. Save the drawing as EX27-3.
3. Use the **POLYGON** and **CIRCLE** commands to draw the front view of the heavy hex nut exactly as shown. Do not add dimensions or centerlines.



4. Create a block named HEAVY HEX NUT and open it in the **Block Editor**.

5. Use the **Concentric**, **Fix**, **Horizontal**, **Parallel**, and **Tangent** options of the **GEOMCONSTRAINT** command to add the constraints shown. The circles are concentric, the opposite sides of the hexagon are parallel, and the large circle is tangent to each side of the polygon.



6. Save the block and exit the **Block Editor**.
7. Resave and close the file.
8. Keep AutoCAD open for the next exercise, or exit AutoCAD if necessary.