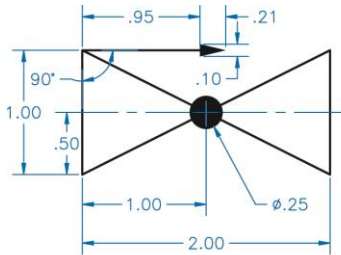
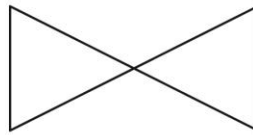


## Exercise 27-1

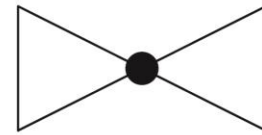
1. Start AutoCAD if it is not already started.
2. Start a new drawing from scratch or use a decimal-unit template of your choice. Save the drawing as EX27-1.



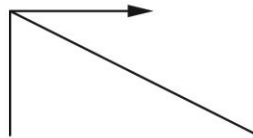
VALVE



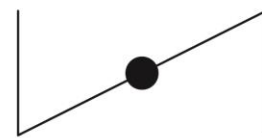
GATE  
VALVE



REGULATING  
VALVE



CHECK  
VALVE



BUTTERFLY  
VALVE

3. Draw the valve shown in the figure. Do not include dimensions. Create a block named **VALVE** and open it in the **Block Editor**.
4. Insert a visibility parameter. Specify a location below the **VALVE** block and approximately centered left to right.
5. Use the visibility tools in the **Block Editor** ribbon tab to create the four visibility states shown.
6. Enter the **Test Block Window**.
7. Select the block to display grips. Pick the visibility parameter grip and select a visibility state to make it current. Repeat this step to view all four of the visibility states.
8. Close the **Test Block Window** and make changes to the block if object visibility is not as expected.
9. Retest the block if you made any changes.
10. Save the block and exit the **Block Editor**.
11. Insert the block into the current drawing and select it to display grips.

12. Pick the visibility parameter grip and select a visibility state to make it current.  
Repeat this step to view all four of the visibility states.
13. Resave and close the file.
14. Keep AutoCAD open for the next exercise, or exit AutoCAD if necessary.