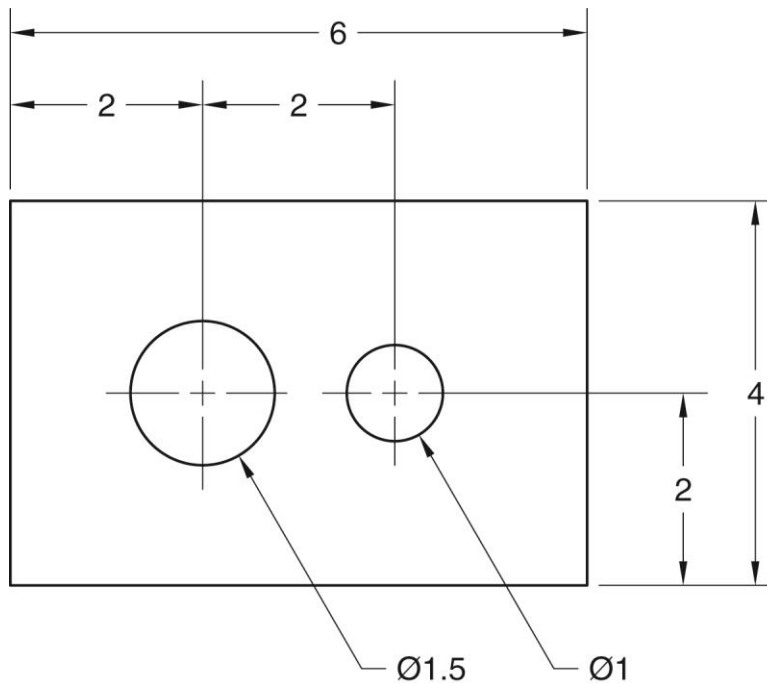


## Exercise 24-2

1. Continue from Exercise 24-1 or start AutoCAD.
2. Open the EX24-1 file you saved during Exercise 24-1.
3. Save a copy of EX24-1 as EX24-2. The EX24-2 file should be active.
4. Draw a  $1 \times 1$  square on layer 0 and define it as a block named PLATE.
5. Insert the PLATE block into the drawing with an X scale factor of 6 and a Y scale factor of 4.
6. Insert the CIRCLE block twice into the drawing as shown in the figure. The small circle is 1 unit in diameter and the large circle is 1.5 units in diameter.



7. Make a block of the entire drawing and name it PLATE-1. Pick the lower-left corner as the insertion point.
8. Insert the PLATE-1 block into the drawing and enter a scale of  $-1, -1$ . During insertion, rotate the object  $45^\circ$ .
9. Resave and close the file.
10. Keep AutoCAD open for the next exercise, or exit AutoCAD if necessary.