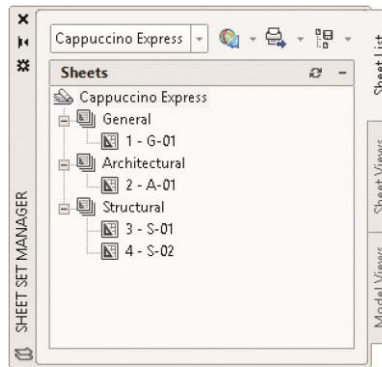


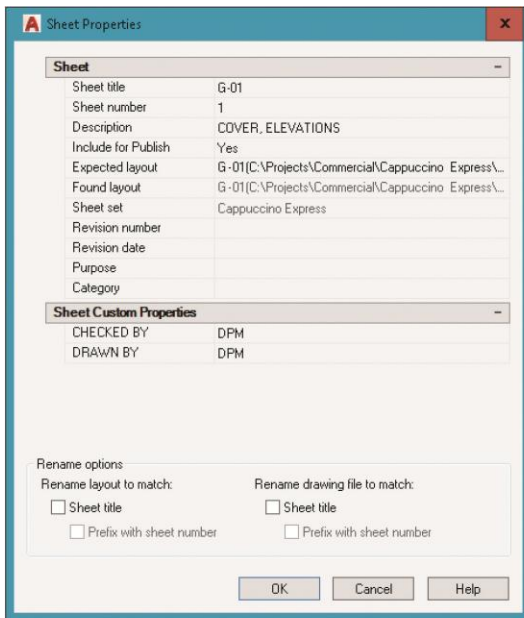
## Exercise 32-5

1. Continue from Exercise 32-4 or start AutoCAD.
2. Open the Cappuccino Express sheet set you created in Exercise 32-2.
3. Start a new drawing from scratch.
4. Activate the **Sheet List** tab of the **Sheet Set Manager** and reorganize and number the subsets and sheets as shown in Figure A.

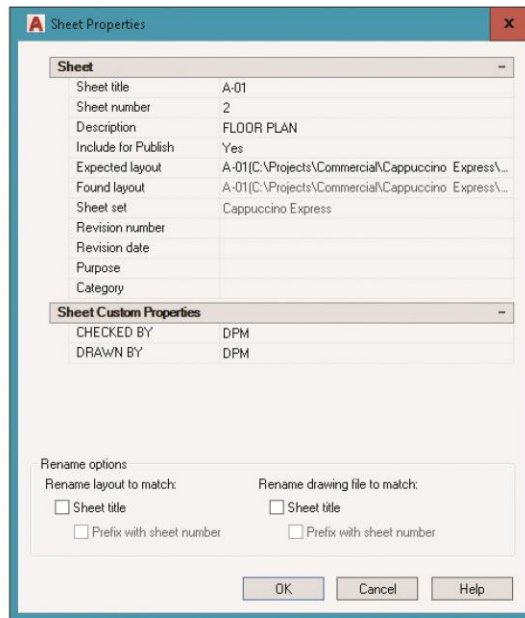


A

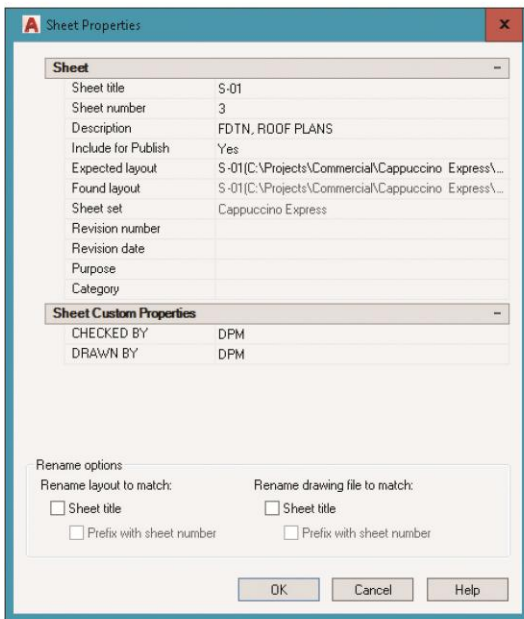
5. Access the **Sheet Properties** dialog box and confirm or adjust the appropriate settings as shown in Figure B.



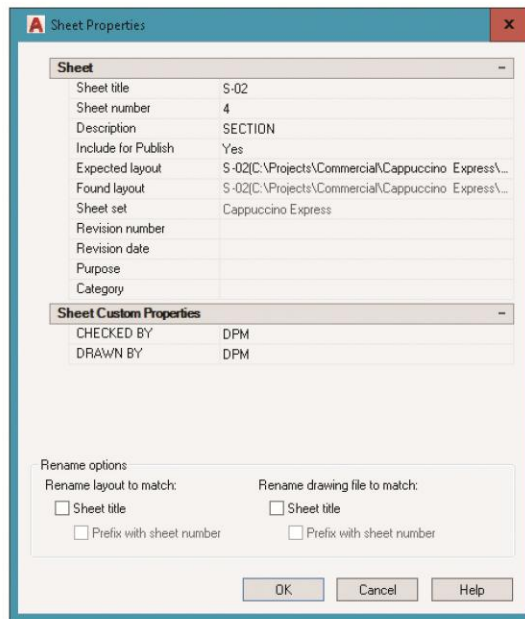
1 - G-01 Sheet



2 - A-01 Sheet



3 - S-01 Sheet



4 - S-02 Sheet

**B**

6. Save and close all open drawings.
7. Keep AutoCAD open for the chapter review and problems, or exit AutoCAD if necessary.