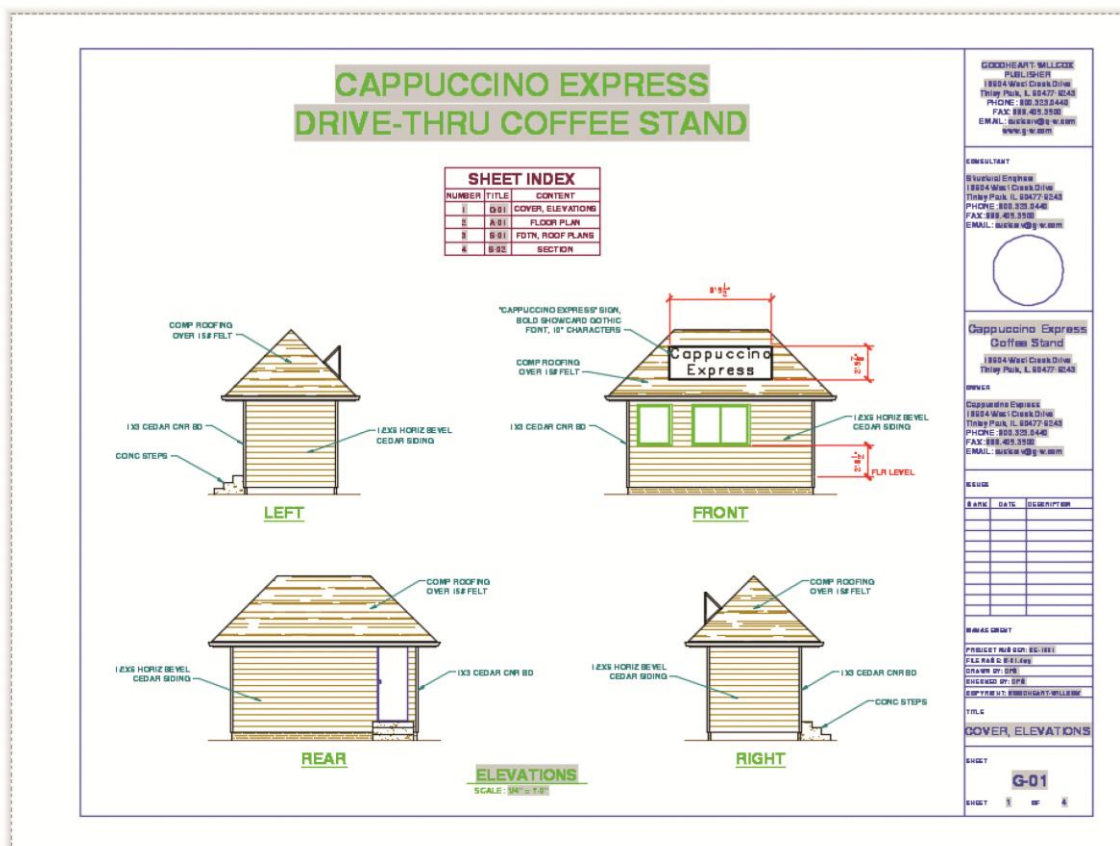


## Exercise 33-7

1. Continue from Exercise 33-6 or start AutoCAD.
2. Open the Cappuccino Express sheet set you created in Exercise 32-2.
3. Display the **Sheet List** tab of the **Sheet Set Manager** and double-click on the 1 - G-01 sheet to open the file and display the layout.
4. Set the A-ANNO-TITL layer current.
5. Use an mtext field to add the cover sheet title shown in the figure. The text justification is **Top center**, and the text is positioned 1/2" below the midpoint of the top edge of the floating viewport. The text height is 1/2". Use the **CurrentSheetSetDescription** field with an **Uppercase** format.



6. Lock the viewport and turn off the A-ANNO-NPLT layer. Resave and close the drawing.
7. Double-click on the 3 - S-01 sheet in the **Sheet Set Manager** to open the file and display the layout.

8. Double-click on the FOUNDATION PLAN title on the layout to display the **Enhanced Attribute Editor**. Double-click on FOUNDATION PLAN in the **Value:** text box to display the **Field** dialog box. Observe the field settings. Notice that the **Associate hyperlink** check box is selected. Pick **Cancel** to return to the layout.
9. Hold down [Ctrl] and pick the **FOUNDATION PLAN** title on the layout to activate the hyperlink. **ZOOM All** to display the entire layout.
10. Explore several additional fields, including one of the fields applying the view scale value and several fields in the title block.
11. Resave and close the file.
12. Keep AutoCAD open for the chapter review and problems, or exit AutoCAD if necessary.