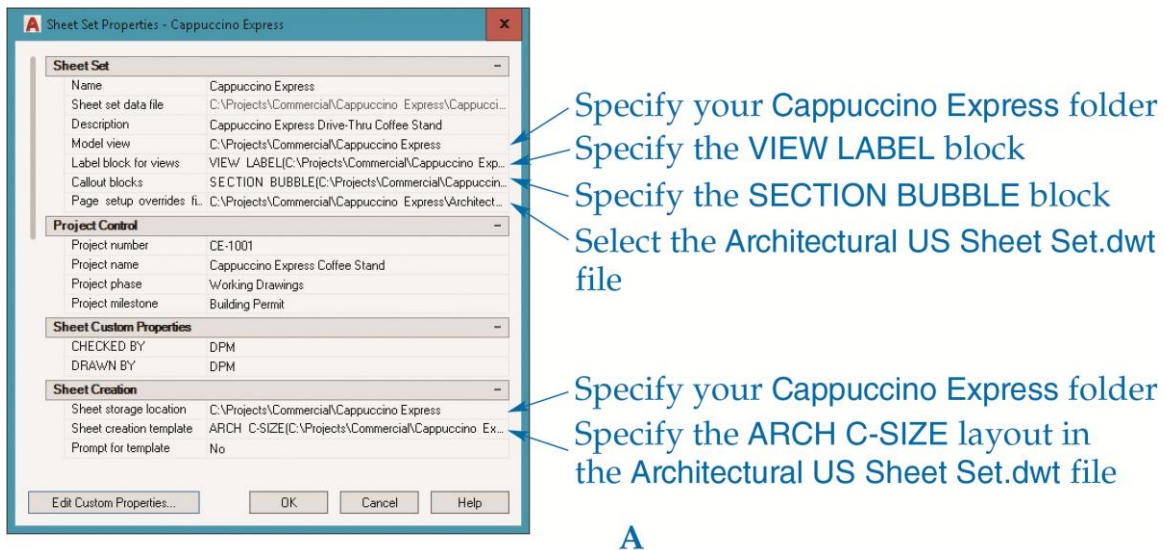


## Exercise 32-2

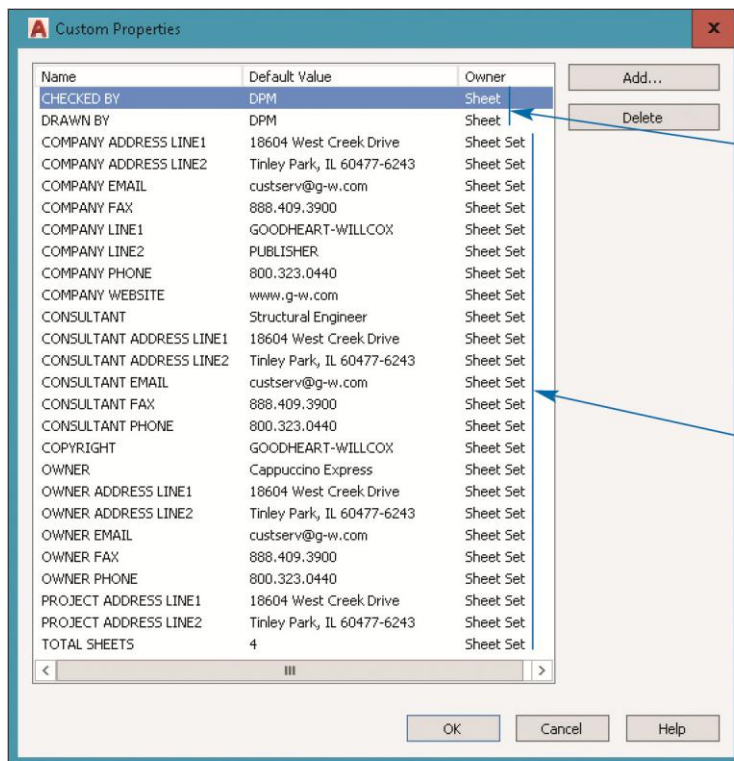
1. Continue from Exercise 32-1 or start AutoCAD.
2. Create a folder titled Cappuccino Express in an appropriate location on your computer or the network. You will store all folders and files related to an architectural project of a drive-through coffee stand in the Cappuccino Express folder.
3. Create a subfolder titled Architectural and a subfolder titled General in the Cappuccino Express folder.
4. Save a copy of the drawing template file Architectural US Sheet Set.dwt from the companion website to the Cappuccino Express folder you created in Step 2.
5. Copy the drawing file A-01.dwg from the companion website to the Architectural folder you created in Step 3, and copy the drawing file G-01.dwg to the General folder you created in Step 3. Open both files and explore the contents. Notice that each file includes a single layout with the same name as the file. Close the files without saving.
6. Start a new drawing from scratch.
7. Open the **Sheet Set Manager**.
8. Select **New Sheet Set...** from the **Sheet Set Control** drop-down list to display the **Create Sheet Set** wizard.
9. Select the **Existing drawings** radio button and pick the **Next** button.
10. Specify the following values:
  - **Name of new sheet set:** Cappuccino Express
  - **Description (optional):** Cappuccino Express Drive-Thru Coffee Stand
  - **Store sheet set data (.dst) file here:** Specify the Cappuccino Express folder you created in Step 2

11. Pick the **Sheet Set Properties** button and refer to Figure A as you adjust the properties in the following steps.



12. In the **Model view** row, specify your Cappuccino Express folder.
13. In the **Label block for views** row, perform the following steps to select the VIEW LABEL block:
  - Pick the ellipsis (...) button to access the **Select Block** dialog box.
  - Pick the ellipsis button to navigate to and select the Architectural US Sheet Set.dwt file.
  - Pick the **Choose blocks in the drawing file:** radio button and select the VIEW LABEL block.
  - Pick the **OK** button.
14. In the **Callout blocks** row, perform the following steps to select the SECTION BUBBLE block:
  - Pick the ellipsis button to access the **List of Blocks** dialog box.
  - Pick the **Add...** button to access the **Select Block** dialog box.
  - Pick the ellipsis button to navigate to and select the Architectural US Sheet Set.dwt file.
  - Pick the **Choose blocks in the drawing file:** radio button and select the SECTION BUBBLE block.
  - Pick the **OK** button as needed.

15. In the **Page setup overrides file** row, pick the ellipsis button and navigate to the Architectural US Sheet Set.dwt file. Pick the **OK** button when you see the alert box.
16. In the **Sheet storage location** row, specify your Cappuccino Express folder.
17. In the **Sheet creation template** row, navigate to the Architectural US Sheet Set.dwt file. The only available layout is **ARCH C-SIZE**.
18. Change the **CHECKED BY** and **DRAWN BY** values to values appropriate to your drawings.
19. Pick the **Edit Custom Properties...** button to access the **Custom Properties** dialog box. Pick the **Add...** button as needed to create the custom properties shown in Figure B.



Select Sheet as the owner for properties that might vary from sheet to sheet

Select Sheet Set as the owner for properties that apply to the entire project and all sheets in the set

**B**

20. Pick the **Next** button to access the **Choose Layouts** page. Pick the **Browse...** button and select the Cappuccino Express folder you created in Step 2. Expand all folders and files and confirm that both layouts are checked.

21. Select the **Import Options...** button. Deselect the **Prefix sheet titles with file name** check box, and select the **Create subsets based on folder structure** and **Ignore top level folder** check boxes. Pick the **OK** button.
22. Pick the **Next** button and review the sheet set details at the **Confirm** page.
23. Pick the **Finish** button to create the sheet set.
24. The new Cappuccino Express sheet set appears in the **Sheet Set Manager**. You should notice General and Architectural subsets and the associated layouts as sheets in the **Sheet List** tab. Review the contents of each tab in the **Sheet Set Manager**. Display the **Details** pane and review the details of the Cappuccino Express sheet set.
25. Keep AutoCAD open for the next exercise, or exit AutoCAD if necessary.