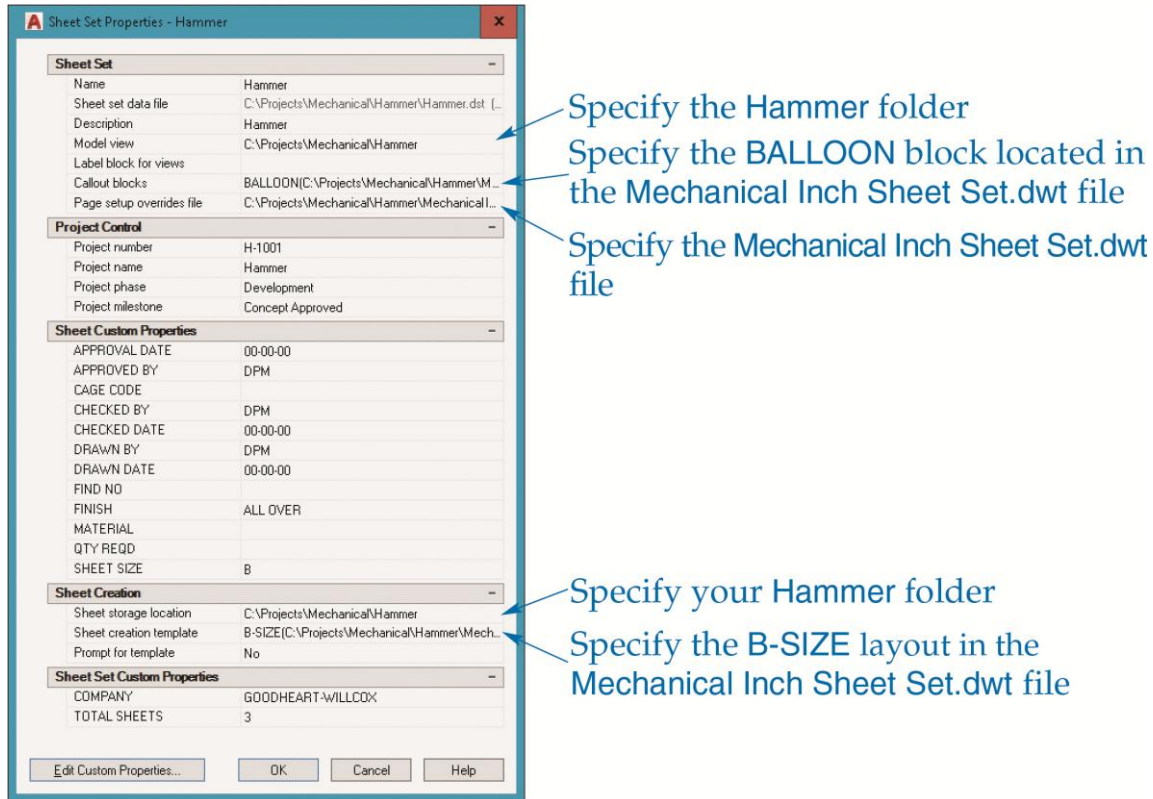


Exercise 32-1

1. Start AutoCAD if it is not already started.
2. Save a copy of the sheet set file Mechanical Inch Sheet Set.dst from the companion website to an appropriate location on your computer or the network.
3. Create a folder titled Hammer in an appropriate location on your computer or the network. You will store all folders and files related to a mechanical project of a hammer in the Hammer folder.
4. Save a copy of the drawing template file Mechanical Inch Sheet Set.dwt from the companion website to the Hammer folder you created in Step 3.
5. Start a new drawing from scratch.
6. Open the **Sheet Set Manager** and review the interface.
7. Select **New Sheet Set...** from the **Sheet Set Control** drop-down list to display the **Create Sheet Set** wizard.
8. Select the **An example sheet set** radio button and pick the **Next** button.
9. Select the **Browse to another sheet set to use as an example** radio button. Locate and select the Mechanical Inch Sheet Set.dst file you saved in Step 2.
10. Pick the **Next** button and specify the following values:
 - **Name of new sheet set:** Hammer
 - **Description (optional):** Hammer
 - **Store sheet set data (.dst) file here:** Specify the Hammer folder you created in Step 3
 - Do not create a folder hierarchy based on subsets

11. Pick the **Sheet Set Properties** button to display the **Sheet Set Properties** dialog box. Refer to the figure as you perform the following steps.



12. In the **Model view** row, specify the Hammer folder.
13. In the **Callout blocks** row, follow these steps to select the BALLOON block:
- Pick the ellipsis (...) button in the **Callout blocks** row to access the **List of Blocks** dialog box.
 - Pick the **Add...** button to access the **Select Block** dialog box.
 - Pick the ellipsis button to navigate to and select the Mechanical Inch Sheet Set.dwt file.
 - Pick the **Choose blocks in the drawing file:** radio button and select the BALLOON block.
 - Pick **OK** as needed.
14. In the **Page setup overrides file** row, pick the ellipsis button and navigate to the Mechanical Inch Sheet Set.dwt file and pick **OK** when you see the alert box.
15. In the **Sheet storage location** row, specify your Hammer folder.

16. In the **Sheet creation template** row, pick the ellipsis button and navigate to the Mechanical Inch Sheet Set.dwt file. The only available layout is **B-SIZE**.
17. Change the **APPROVED BY**, **CHECKED BY**, **DRAWN BY**, and **COMPANY** values to values appropriate to your drawings. Pick the **Edit Custom Properties...** button and view the **Custom Properties** dialog box. Close the **Custom Properties** dialog box without making changes. Pick the **OK** button to return to the **Create Sheet Set** wizard.
18. Pick the **Next** button and review the sheet set details at the **Confirm** page.
19. Pick the **Finish** button to create the sheet set.
20. The new Hammer sheet set appears in the **Sheet Set Manager**. Review the contents of each tab in the **Sheet Set Manager**. Display the **Details** pane and review the details of the Hammer sheet set.
21. Close any open files without saving.
22. Keep AutoCAD open for the next exercise, or exit AutoCAD if necessary.