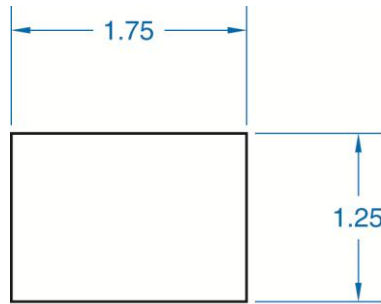
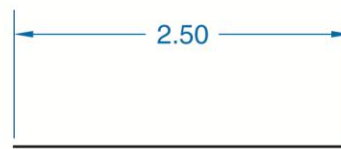


## Exercise 17-2

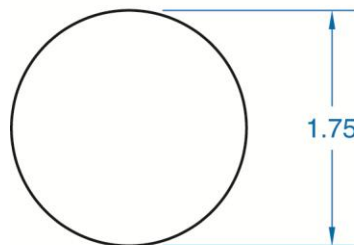
1. Continue from Exercise 17-1 or start AutoCAD.
2. Start a new drawing from scratch or use a decimal-unit template of your choice. Save the drawing as EX17-2.
3. Set up appropriate layers, including a layer for dimensions.



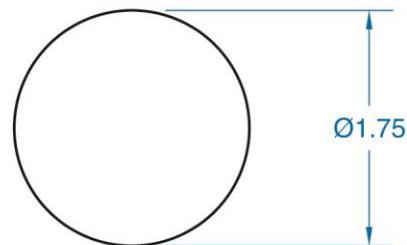
**Object 1**



**Object 2**



**Object 3**



**Object 4**

4. Draw the objects shown.
5. Create an appropriate dimension style. Use the **DIMLINEAR** command to add the dimensions shown to Object 1. Use the **Endpoint** object snap to pick points establishing the origins of the extension lines.
6. Access the **DIMLINEAR** command and use the **Select object** option to dimension the remaining objects exactly as shown.
7. Resave and close the file.
8. Keep AutoCAD open for the next exercise, or exit AutoCAD if necessary.